



**PLURINATIONAL STATE OF BOLIVIA**

**Ministry of Environment and Water Resources**

**Ministry of Development Planning**

**BOLIVIA : PROPOSAL FOR PHASE 1 FUNDING**

**PILOT PROGRAM FOR CLIMATE RESILIENCE**

**PPCR Subcommittee**

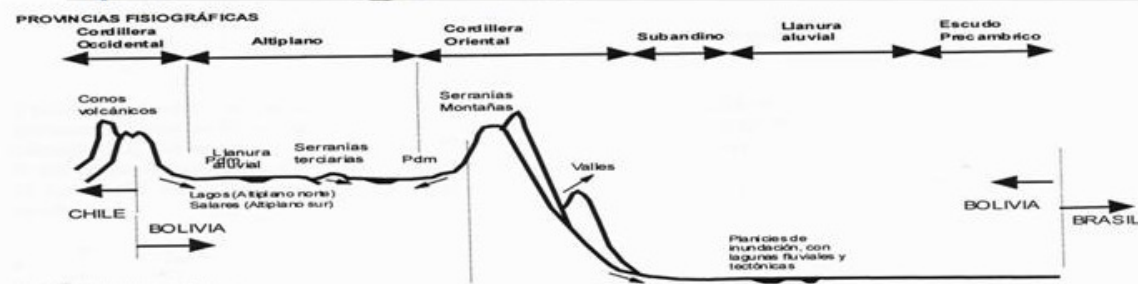
**Washington DC**

**June, 23 2010**



## GEOGRAPHIC LOCATION

## BOLIVIA



**Bolivia is highly vulnerable to climate change impacts, both extreme and gradual, from institutional, biophysical, socio-economical and environmental vulnerability point of view.**

# IMPACTS OF CLIMATE CHANGE IN BOLIVIA

The main climatic threats are: floods, droughts, hailstorms and frosts, but there are also heavy snowfall and strong winds

Also, there are gradual impacts of climate change expressed mainly in temperature increases and changes in rainfall patterns

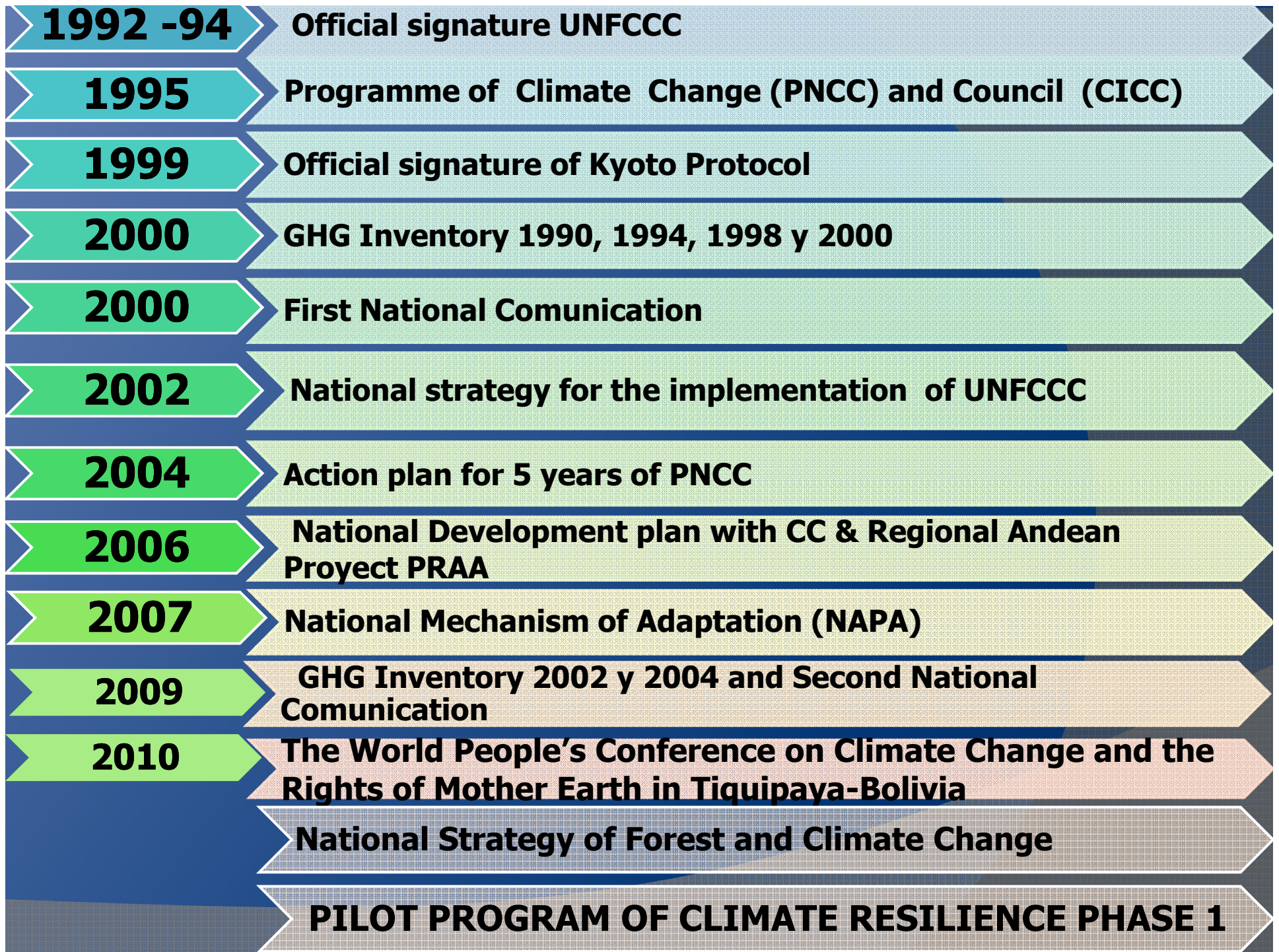


## EXTREME EVENTS INTENSIFIED BY CLIMATE CHANGE

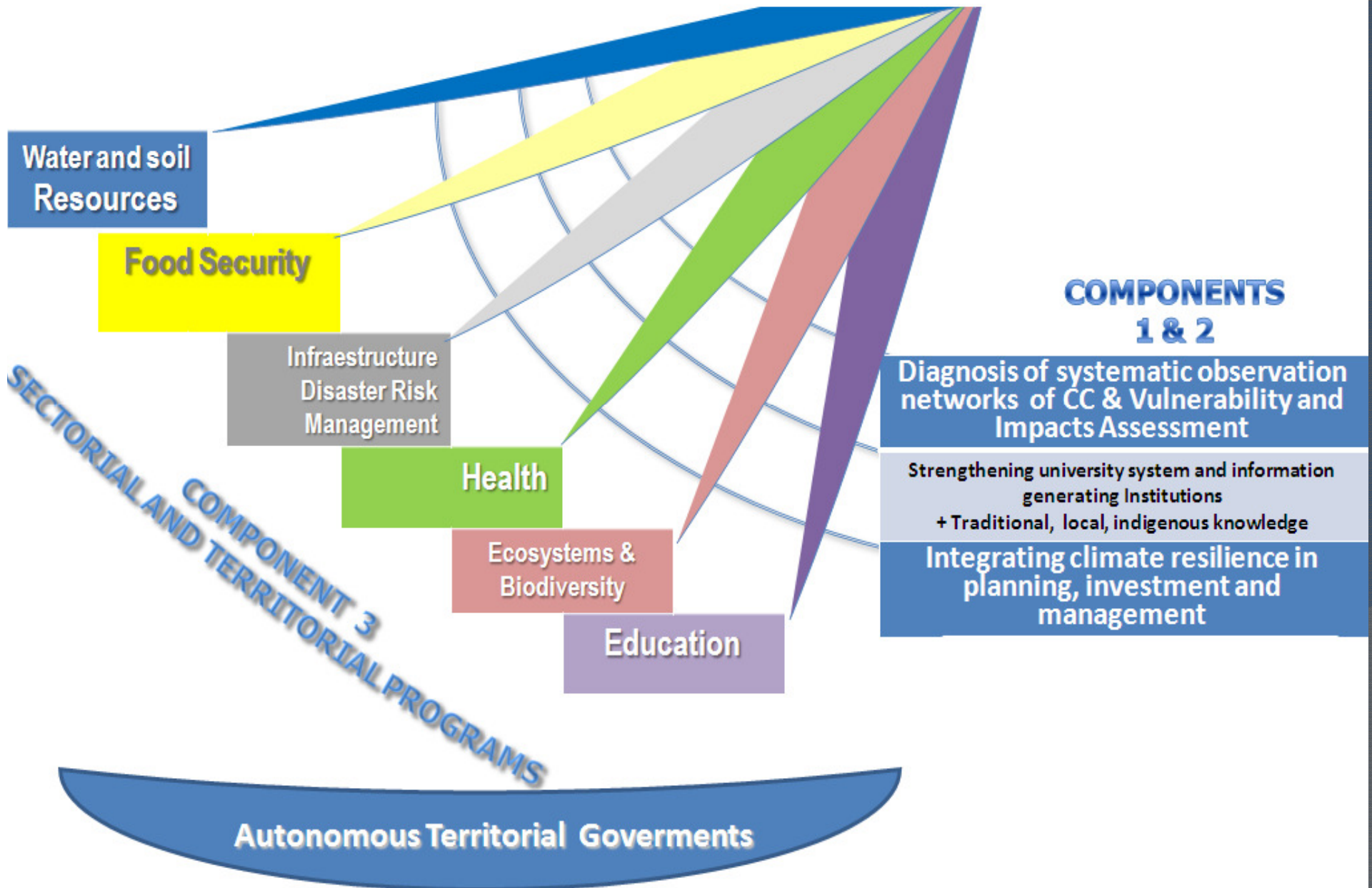
- Flood: Increase in frequency and intensity of rainfall. In low land areas, during extreme rainfall events, annual average river runoff has increased by 5- 40%.
- Drought: More intense and longer, in around 40% of Bolivian territory, home to 70% of the population

# IMPACTS OF CLIMATE CHANGE IN BOLIVIA

- **Water Resources** - Glaciers Retreat has accelerated compromising water supplies, food security and potentially hydropower generation.
- **Health:** Malaria, dengue and other vector-borne diseases, show a growing trend, extent and altitude.
- **Food Security:** Loss or reduction of crops productivity , Change in agricultural calendar, Change in water availability for irrigation
- **Survival of indigenous peoples:** The Indigenous Peoples are under extreme threat. Arid land now faces increased water shortages, making them among the first internal climate change refugees.
- **Economic and social impacts:** Significant proportion of GDP already lost due to climate change.



# PRIORITY SECTORS PPCR-BOLIVIA



# OBJECTIVE OF THE PPCR-BOLIVIA PHASE 1

**A) Contribute to the incorporation of climate change risk management in to policies, in sectorial and territorial planning, investment and management.**

**B) Strengthen institutional and management capacity to improve the response to climate change in the prioritized vulnerable sectors.**

- **Formulate financial mechanisms to lever up investment oriented to the development of capacities and climate resilience.**
- **Strengthen the information and data base systems oriented to decision making.**
- **Enhance coordination between key actors and sectors to integrate climate resilience during the elaboration and execution of investment programs or projects, especially productive ones.**
- **Develop planning-action approaches, integrating climate resilience considerations.**
- **Back up the formulation of regional and inter sectorial programs and projects with a climate change approach.**

# CONSULTATION PROCESSES

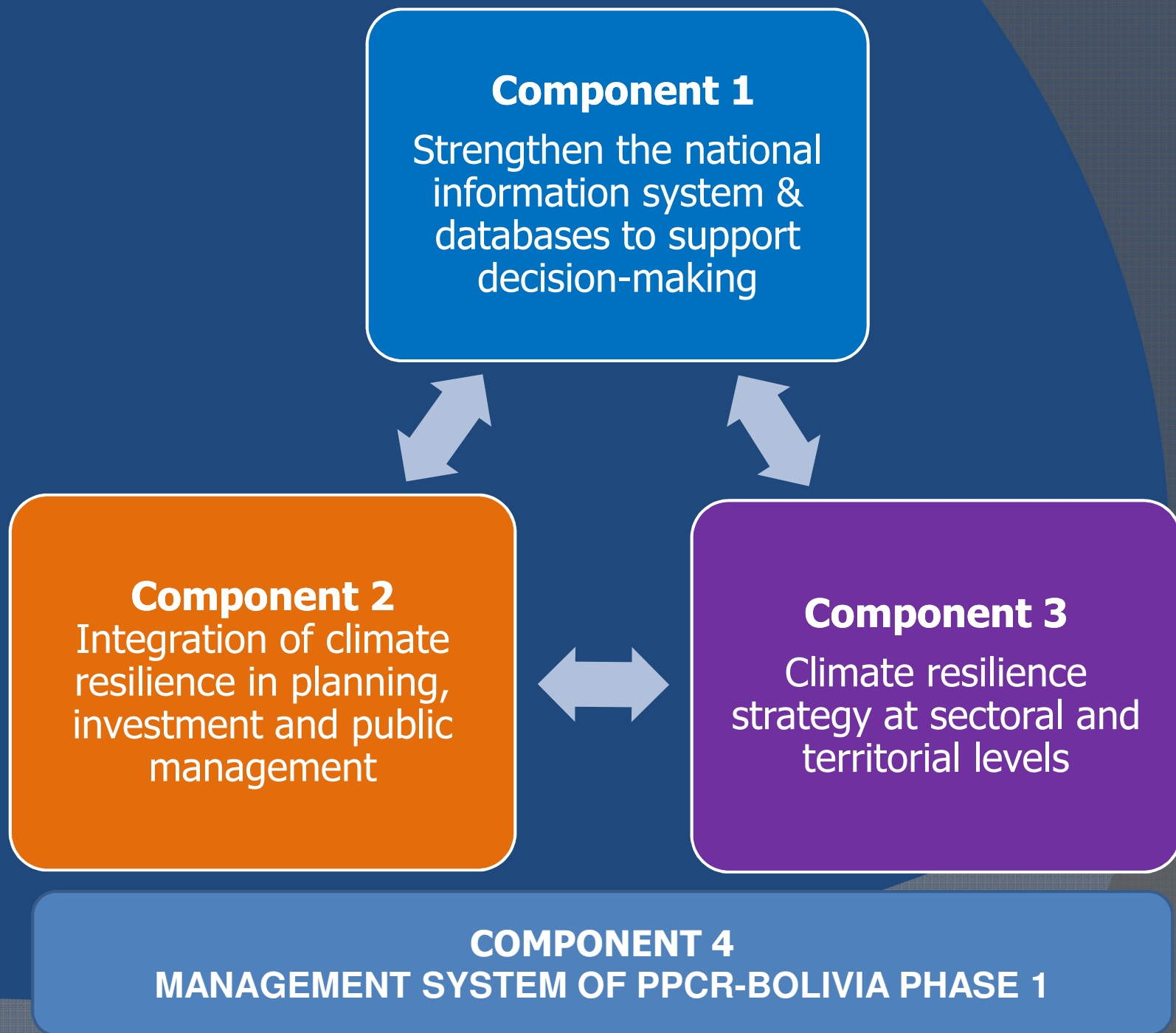




# PRINCIPLES

- ✓ Consistency with the Political Constitution of Multinational State of Bolivia, Government Plan, National Development Plan, the National Mechanism for Adaptation to Climate Change
- ✓ Broad context of Living Well in harmony with Mother Earth and Poverty Reduction.
- ✓ Ensure that the co-benefits be extended regionally wherever possible and maximize the multisectoral benefits
- ✓ Developed with a focus on integration and complementarity with Sectoral Programs, Plans, and Projects.
- ✓ Broad participation in design of proposal PPCR-Bolivia and in implementation of the pilot program.

**PROGRAM STRUCTURE**



# COMPONENT 1: STRENGTHEN THE NATIONAL INFORMATION SYSTEM AND DATABASES TO SUPPORT DECISION-MAKING

Enhance capacities within relevant institutions and ministries, through:

- ⦿ Comprehensive diagnosis of vulnerabilities, impacts, and adaptative capacity to climate change;
- ⦿ Identification of the strengthening needs of the systematic observation networks;.
- ⦿ Identification of needs for capacity building
- ⦿ Strengthening of knowledge and information generating institutions (including the university system).

# C 2: INTEGRATION OF CLIMATE RESILIENCE INTO PLANNING, INVESTMENT AND PUBLIC MANAGEMENT

## 2.1 PLANNING

2.1.1 Incorporation of Climate Change in the NATIONAL ECONOMIC and SOCIAL DEVELOPMENT PLAN

2.1.2 Integrating Climate Change in the INTEGRAL PLANNING AND INVESTMENT SYSTEM OF THE PLURINATIONAL STATE OF BOLIVIA

## 2.2 PUBLIC MANAGEMENT

2.2.1 Structure of the PLURINATIONAL COUNCIL OF CLIMATE CHANGE and its TECHNICAL SECRETARY

2.2.2 Design of FINANCE MECHANISMS FOR CLIMATE CHANGE

## **COMPONENT 3: DEVELOPMENT OF A CLIMATE RESILIENCE STRATEGY AT TERRITORIAL AND SECTOR LEVEL**

**3.1 FORMULATION OF STRATEGIC SECTORIAL PROGRAMS ADDRESSING CLIMATE CHANGE**

**3.2 FORMULATION OF STRATEGIC TERRITORIAL PROGRAMS ADDRESSING CLIMATE CHANGE**

**3.3 PREPARATION OF INVESTMENT AND FINAL DESIGN DOCUMENTS AND COMPLEMENTING EXISTING DOCUMENTS WITH CLIMATE CHANGE APPROACH**

**3.4 FORMULATION OF NATIONAL STRATEGIC CLIMATE RESILIENCE PROGRAM**

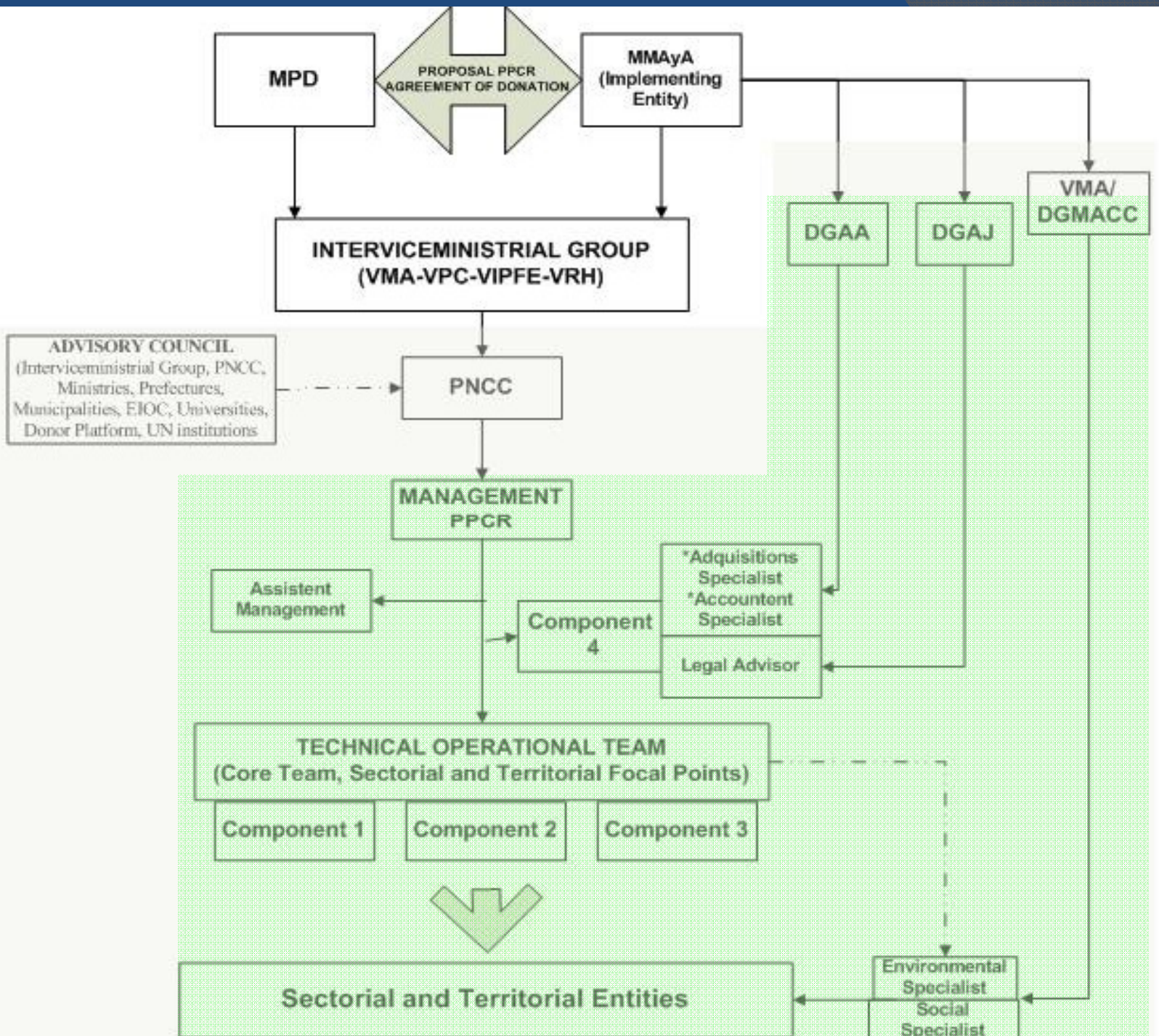
**PROPOSAL PPCR - BOLIVIA PHASE 1**  
**FORMULATION OF THE STRATEGIC PROGRAM FOR CLIMATE RESILIENCE**

<b>COMPONENT 1</b>	<b>COMPONENT 2</b>	<b>COMPONENT 3</b>
<b>STRENGTHENING THE INFORMATION AND DATABASE SYSTEM FOR DECISION MAKING PROCESSES</b>	<b>INTEGRATION OF CLIMATE RESILIENCE IN PLANNING, INVESTMENT AND MANAGEMENT</b>	<b>STRATEGY FOR THE IMPLEMENTATION OF SECTORAL AND TERRITORIAL CLIMATE RESILIENCE</b>
1.1 COMPREHENSIVE DIAGNOSIS AND DESIGN FOR STRENGTHENING OF SYSTEMATIC OBSERVATION NETWORKS	2.1 INTEGRATING CLIMATE RESILIENCE IN PLANNING AND INVESTMENT	3.1 FORMULATION OF SECTORAL STRATEGIC CLIMATE RESILIENCE PROGRAMS
1.2 STRENGTHENING OF INFORMATION and KNOWLEDGE GENERATING INSTITUTIONS	2.1.1 Integration of climate resilience in the Plan for Economic and Social Development (PESD)	3.2 FORMULATION OF TERRITORIAL STRATEGIC CLIMATE RESILIENCE PROGRAMS
1.2.1 Strengthening of the National System of Information for Development (MPD-SNID) with Node on Climate Change	2.1.2 Integration of climate resilience in the State Investment Mechanisms	3.3 ELABORATION AND/OR COMPLEMENTATION OF PRIORIZED PREINVESTMENT AND INVESTMENT STUDIES (identification studies (profile-prefeasibility) and Technical, Social, Economical and Environmental Studies (TESA and/or final design)) WITH CLIMATE RESILIENCE APPROACHES
1.2.2 Strengthening the National Statistical Institute for insertion of Climate Change thematics in census and statistical publications	2.2 INTEGRATION OF CLIMATE RESILIENCE IN THE PUBLIC ADMINISTRATION STRUCTURE	3.4 FORMULATION OF A STRATEGIC PROGRAM FOR CLIMATE RESILIENCE
1.2.3 Strengthening of the National Climate Change Program (PNCC).	2.2.1 Structuring of the Plurinational Council on Climate Change and its Technical Secretariat	
1.3 STRENGTHENING OF THE UNIVERISTY SYSTEM	2.2.2 Design of funding mechanisms for climate resilience	
<b>COMPONENT 4 MANAGEMENT SYSTEM FOR PPCR-BOLIVIA PHASE 1</b>		

## Component 4: Management of the PPCR- BOLIVIA Phase 1

This component aims to establish the organizational structure, financial and administrative set-up and operations as well as monitoring the progress of the PPCR Phase 1.

# Component 4: MANAGEMENT SYSTEM PPCR-BOLIVIA PHASE 1







# BUDGET PPCR-BOLIVIA PHASE 1

Components	Amount (US\$) estimates
Consultancies <i>(Priority Studies – preparation of investment proposals)</i>	1,067,080
Equipment	160,518
Consultation and Dissemination incl. workshops	144,459
Contingencies	75,000
Operational Costs	52,943
<b>TOTAL AMOUNT</b>	<b>1,500,000</b>

## **Other contributions** (bilateral or private sector):

IDB's Technical Assistance Aprox. 100,000 US\$.  
Royal Danish Embassy Aprox. 210,000 US\$.

*Thank you*