

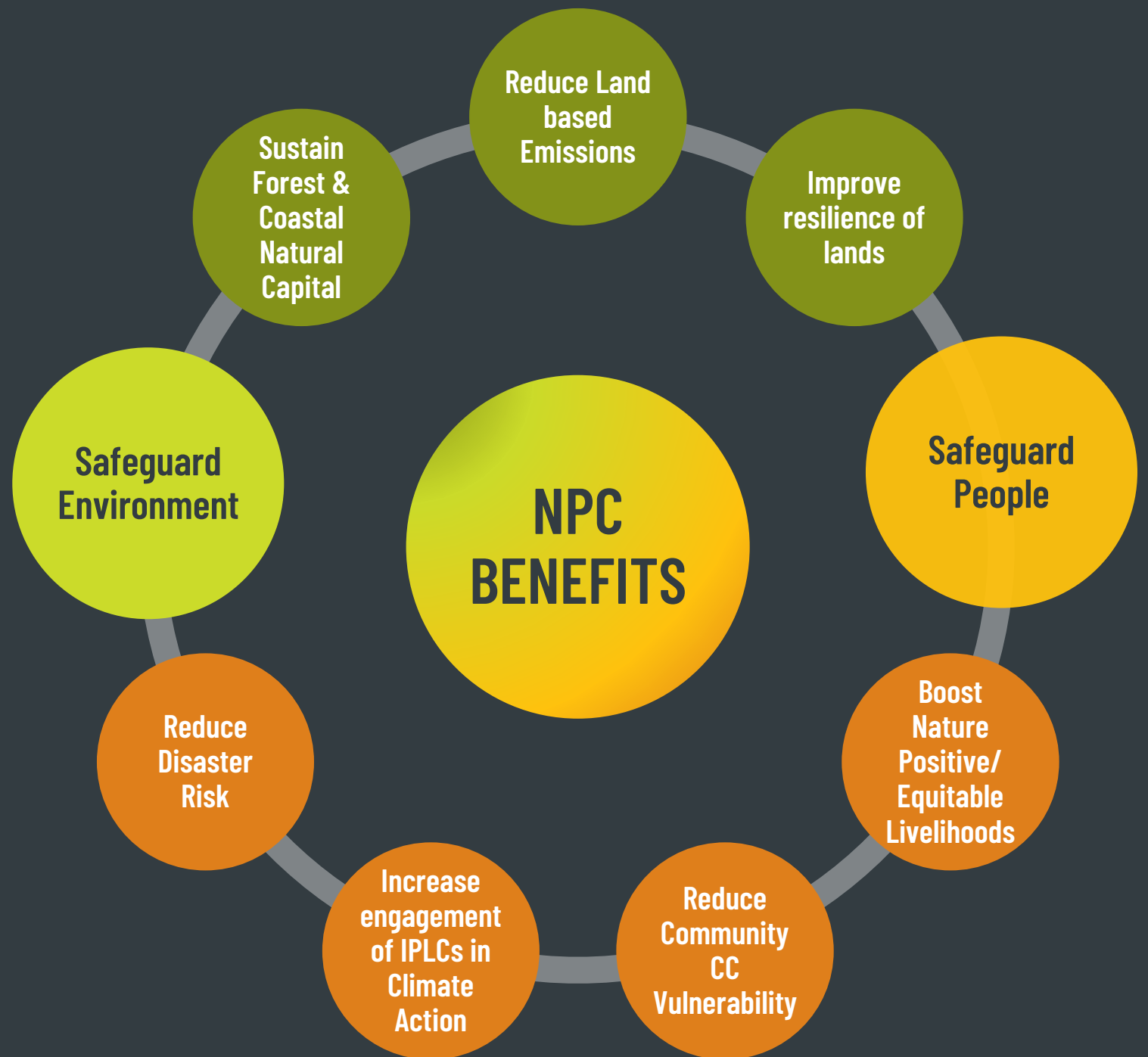


Nature, People and Climate Investment Program

June 24, 2022

Nature, People and Climate Investment Program

Integrated Landscape Management for Multiple Benefits



What are Nature-based solutions?

Two prevailing definition of NBS:

- Actions to protect, sustainably manage and restore natural or modified ecosystems that address societal challenges effectively and adaptively, simultaneously providing **human wellbeing and biodiversity benefits**. [IUCN- Cohen-Shacham, et al. (2019)]
- NBS aim to help societies address a variety of **environmental, social and economic challenges** in sustainable ways. [European Commission (2015)]

Elements of both these definitions align with the CIF's approach to NBS in the CIF Nature Program.

Why are Nature-based solutions needed?

- More than half of the world's GDP is dependent on nature*
- By 2030, nature based solutions can deliver emission reductions and removals of at least 5 GtCO₂e per year**
- Nature-based solutions can generate multiple benefits and should be planned, designed and implemented to deliver:
 - GHG Emissions Reductions
 - Climate Change adaptation & Resilience Strengthening
 - Livelihood development
 - Biodiversity conservation
- But ... to meet climate change, biodiversity and land degradation targets already set, **investment in NbS ought to triple** in real terms by 2030 and increase four-fold by 2050*

Building on CLF's Experience with Nature

- Forest Investment Program: US\$700m program tackling sustainable forest management & emissions reductions from deforestation and degradation
 - 41 million hectares of land brought into sustainable land management in 13 countries
 - Direct financing to indigenous peoples and local communities at the coal face of climate change impacts through Dedicated Grant Mechanism
- Pilot Program for Climate Resilience (PPCR): US\$1.2 billion program supports developing economies in building their resilience to the impacts of climate change.
 - Includes many projects that help strengthen the resilience of lands, coasts and rural people in the face of climate change
- NPC breaks Mitigation and Adaptation out of silos

Dedicated Grant Mechanism

- CIF's concerted effort to provide a greater voice/role for IPLCs in management of natural resources
- Empowers and finances IPLCs to lead in driving climate change solutions
- Led by Indigenous Peoples and Local Communities at every level
- IPLCs in FIP DGM countries implementing over 600 subprojects benefitting more than 250,000 community members to date.



Landscape: Connectivity, Threats and Approaches

UPPER WATERSHED FORESTED

LOWLAND INTENSIFICATION

PERIURBAN INTERFACE

COASTAL ZONE

ILLUSTRATIVE THREATS

Smallholder & Industrial Ag expansion
Land conversion/Biodiversity loss
Soil retention/Sediment loads

Industrial Ag-Livestock/FW Fisheries
Large farms /Industrial Estates/SMH
Livelihood Vulnerability/Deforestation

Farms/Industry Upstream
Pollution/waste /water supply

Coastal fisheries/Fish Farming
Pollution/sedimentation/CC impacts

Supply Chain Demand, Capital Mobilized, Partnerships + DGM Global



ILLUSTRATIVE APPROACHES

Mixed cropping-coffee/cocoa
Natural Forest Management
HCVF-HCS set asides/REDD+

Sustainable/regen & Nature positive Ag
Sustain Supply Chains/Agroforestry
Reforestation/EBA/Integrated Farming

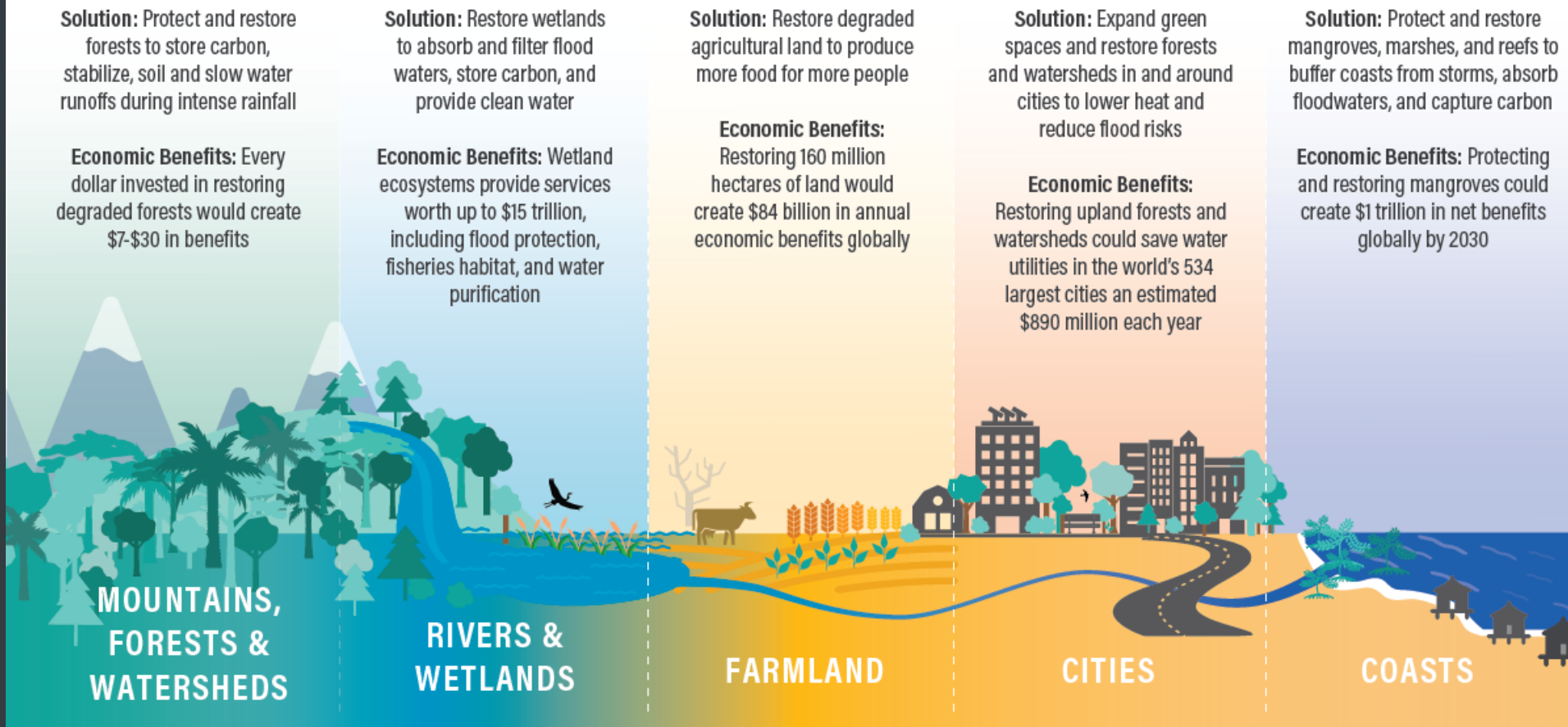
Payment for Environmental Services
Fresh water management

Mangrove & Coastal Restoration
Disaster Risk Reduction
Sustainable Aquaculture

Emissions Reduced, Land and Community CC Resilience Strengthened, Livelihoods Improved

NBS Economic Benefits

Nature-Based Solutions Can Deliver Big Economic Benefits

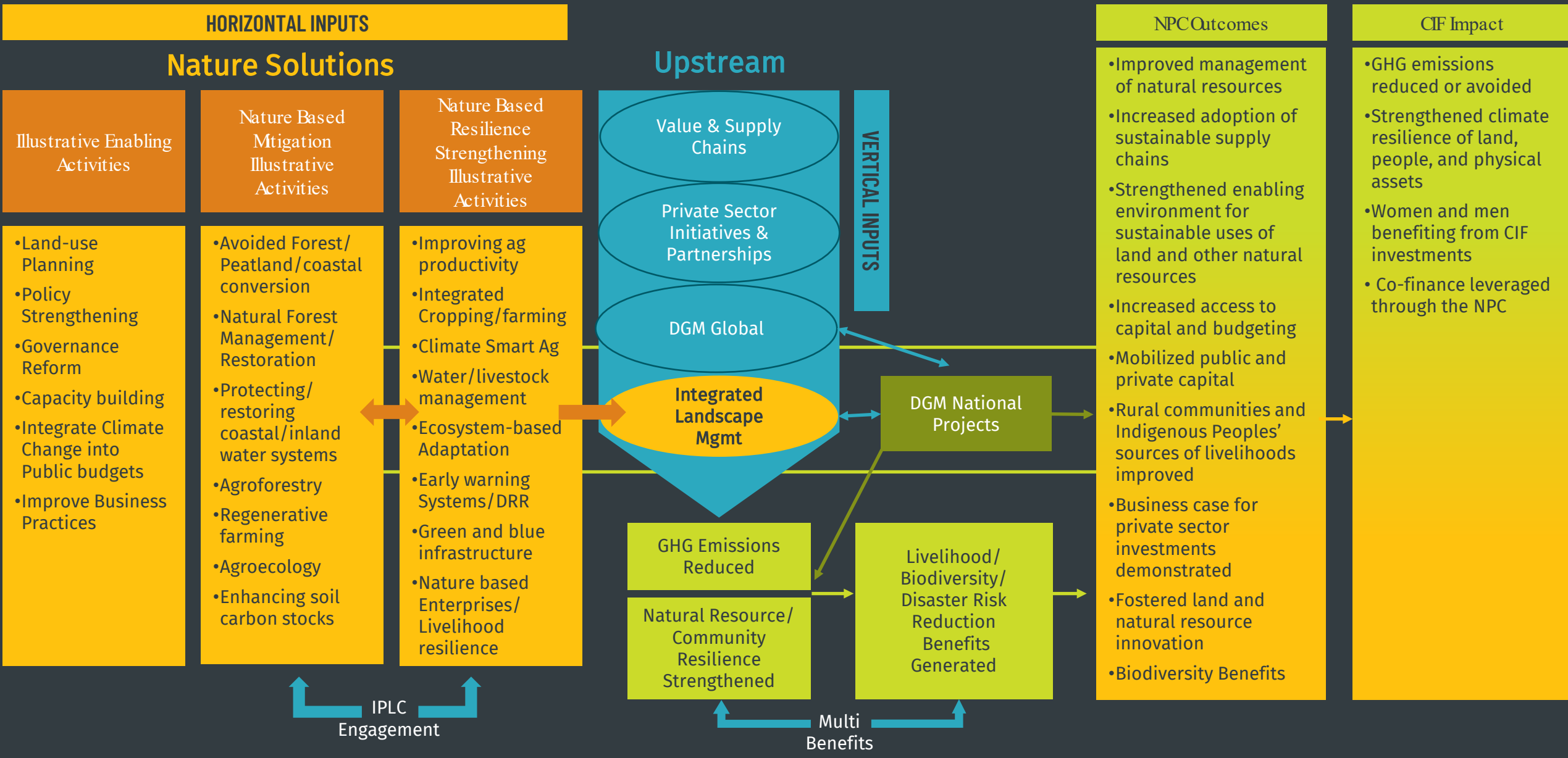


Source: Verdone and Seidl, *Roots of Prosperity* (Forests); Millennium Ecosystem Assessment (Rivers & Wetlands); A. Wu, *How Can Restoring Degraded Landscapes Deliver Financial Returns?* (Farmland); The Nature Conservancy, *Beyond the Source* (Cities); Global Commission on Adaptation, *Adapt Now* (Coasts).

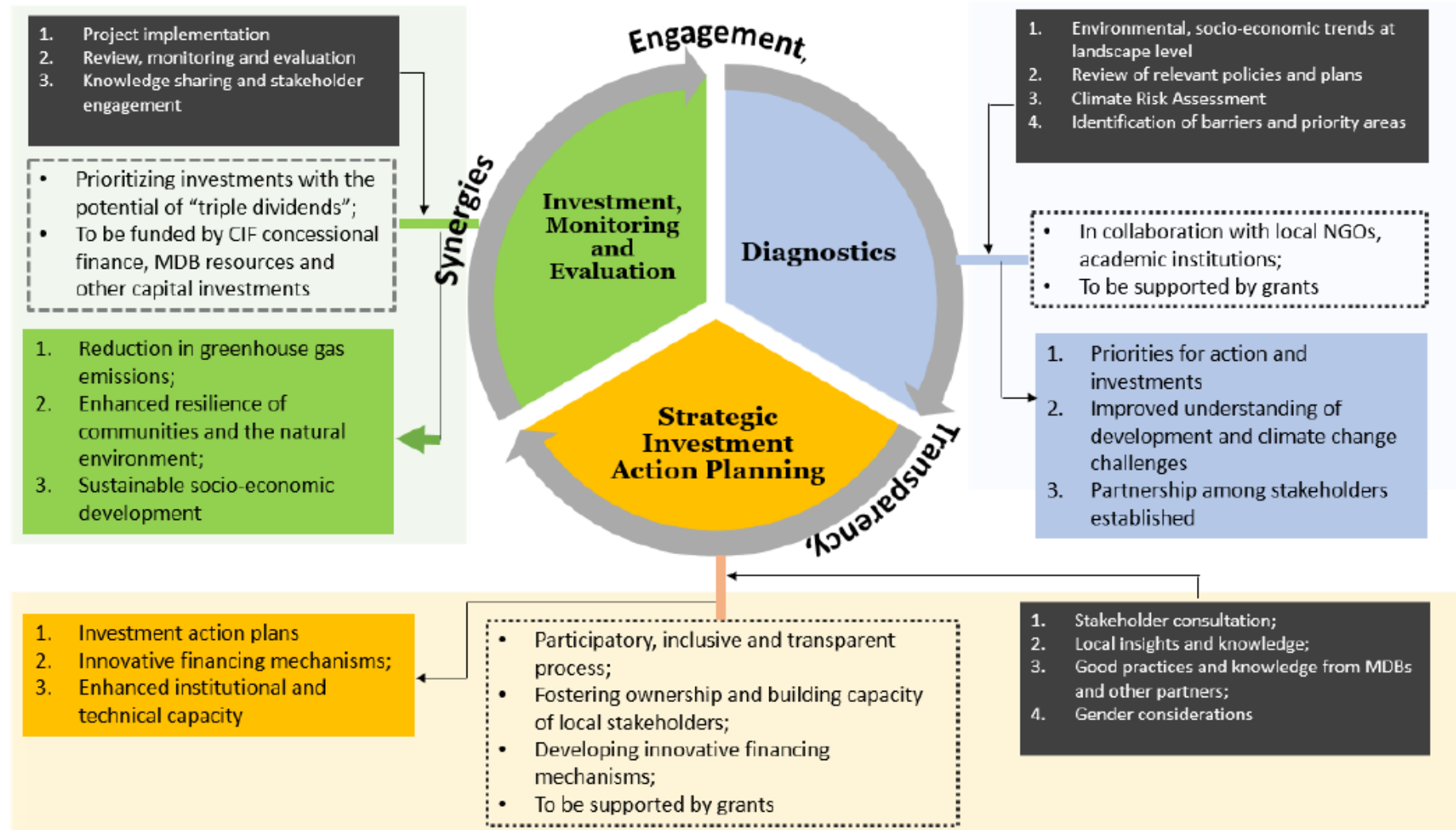


WORLD RESOURCES INSTITUTE

Program Design Elements



Programmatic Approach & Phases to Developing Solutions



Summary Messages

- **It's the Right Time for NBS:** The NPC has come along at a time when momentum has been generated for Nature-based solutions.
- **Integrated Landscape Management at scale is core to the approach:** The program will target key countries and landscapes to achieve **both mitigation and adaptation impacts** called for by the international scientific community.
- **The Program is designed to deliver Multiple-Benefits:** The NPC design recognizes the interdependence between land use, climate change mitigation and adaptation, biodiversity and people.
- **Dedicated Grant Mechanism is a unique component of the NPC:** Indigenous peoples and local communities at the coal face of climate change effects can deploy their knowledge and capacities to directly engaged in climate action.

Launch Timeline

MDB WG review and feedback on Eol forms	Next week
Finalization of Terms of Reference for Expert Group	May 12
“Soft” Launch EOI	May 27
Stockholm +50 Event – Formal Launch	June 1
Post position announcement for Independent Expert Group	June 23
Provide update to GCAP on status and timeline	June 24
Onboarding Expert Group members	End of July
Eol Submissions due	August 1
Expert group analysis on the Eols and report drafting	1st week in August until Mid-September
GCAP Intersessional Meeting to approve countries – EG co-chairs to present report to TFC and answer questions from members	October
COP27 in Egypt	November 7-17

CIF



CLIMATE INVESTMENT FUNDS

Investing in the future

