



# *“Protecting and Sustaining Zambezi River Basin Natural Ecosystem”*

CLIMATE INVESTMENT FUNDS (CIF)  
NATURE, PEOPLE AND CLIMATE  
PROGRAMME (NPC)

## ZAMBEZI REGION INVESTMENT PLAN

(MALAWI, MOZAMBIQUE, NAMIBIA, TANZANIA & ZAMBIA)

REPRESENTED BY THE GOVERNMENT OF  
ZAMBIA

February 2025

# PRESENTATION OUTLINE



ZAMCOM



- Background
- Regional State of the Environment
- Stakeholder's Consultation
- National and Regional Climate Strategies; and NbS Efforts
- Program Description
- Financing Plan
- Potential Risks and Mitigation Measures
- Implementation Arrangements
- Outcomes and Sample Indicators

# BACKGROUND



- Fourth largest in Africa
- Eight riparian countries: Angola, Botswana, Malawi, Mozambique, Namibia, Tanzania, Zambia and Zimbabwe
- 13 sub-basins
- Population is about 51 million

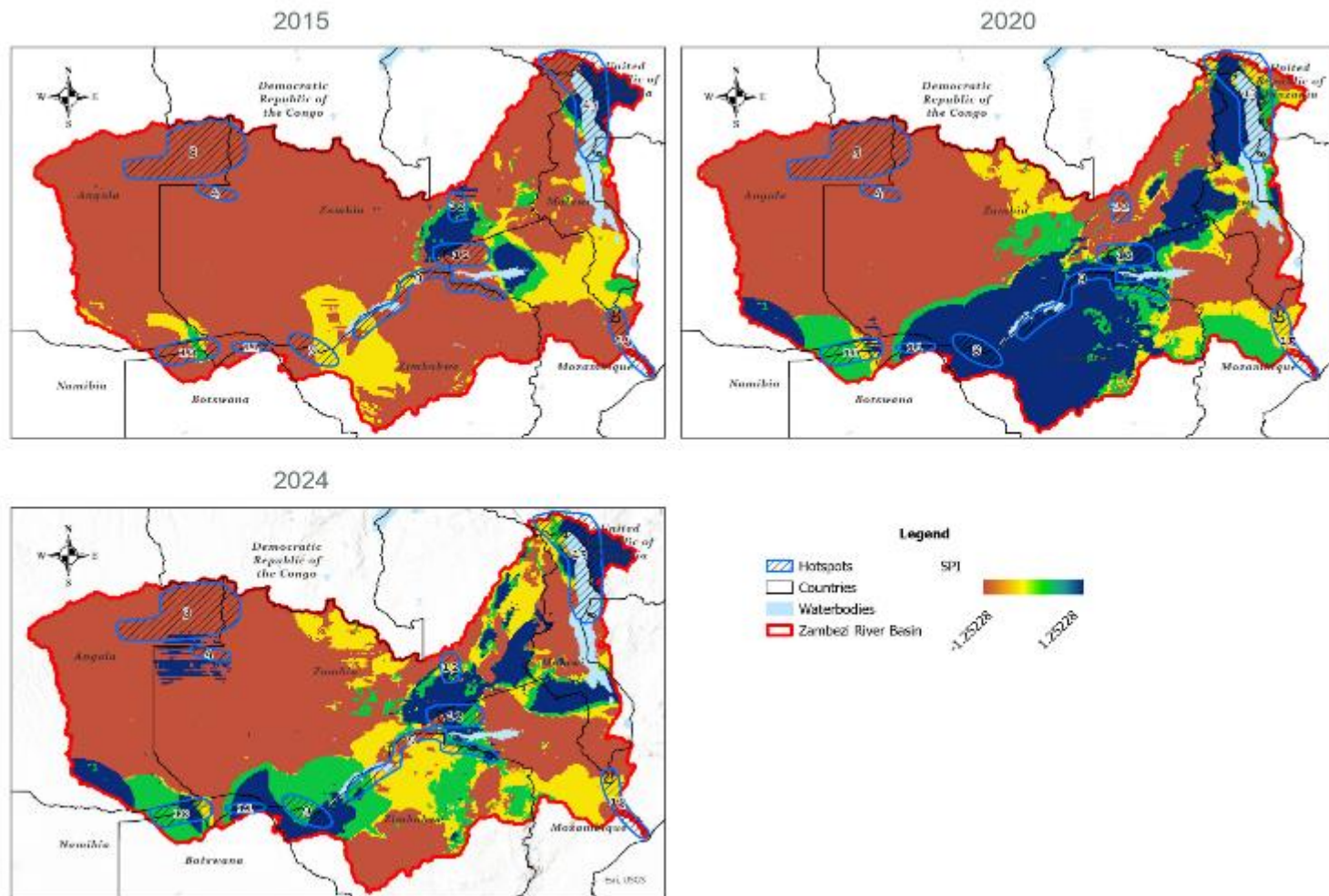


# REGIONAL STATE OF THE ENVIRONMENT



## SPI: Indicates mild metrological droughts in the basin

SPI Value	Interpretation
$\geq 2.0$	Extremely Wet
1.5 to 1.99	Very Wet
1.0 to 1.49	Moderately Wet
-0.99 to 0.99	Near Normal (No drought/wetness)
<b>-1.0 to -1.49</b>	<b>Moderately Droughts</b>
-1.5 to -1.99	Severely Dry (Severe Drought)
$\leq -2.0$	Extremely Dry (Extreme Drought)





# AGRICULTURE, FORESTRY AND OTHER LAND USE



Bushland converted to agricultural Land, Tanzania

SECTOR	KEY ISSUES
<b>Forests, Wildlife and Biodiversity</b>	<ul style="list-style-type: none"> <li>• Forest degradation, human wildlife conflict, loss of habitat and indigenous forest species</li> </ul>
<b>Land &amp; Agriculture</b>	<ul style="list-style-type: none"> <li>• Land use changes (<b>Forest loss ≈ 40-60%</b>)</li> <li>• Overdependence on rainfed agriculture: Agricultural land is <b>5.2m Ha</b>, only <b>0.25m Ha irrigated (4.8%)</b></li> </ul>
<b>Water Resources</b>	<ul style="list-style-type: none"> <li>• Decreased water availability, wetland degradation, declining water quality</li> </ul>

# PEOPLE



ZAMCOM



## Impacts of Climate Change on People

Climate change affecting water availability and fishing activities in the basin (Upper left: Mozambique; Lower right and Left: Namibia)



AFRICAN DEVELOPMENT BANK GROUP  
GROUPE DE LA BANQUE AFRICAINE  
DE DEVELOPEMENT



win-win cooperation / cooperacao, ganhas tu, ganho eu





## Impacts of Climate Change to Nature

**Upper:** Reduced Flows at Chobe River (tributary of Zambezi River) - Border between Namibia and Botswana



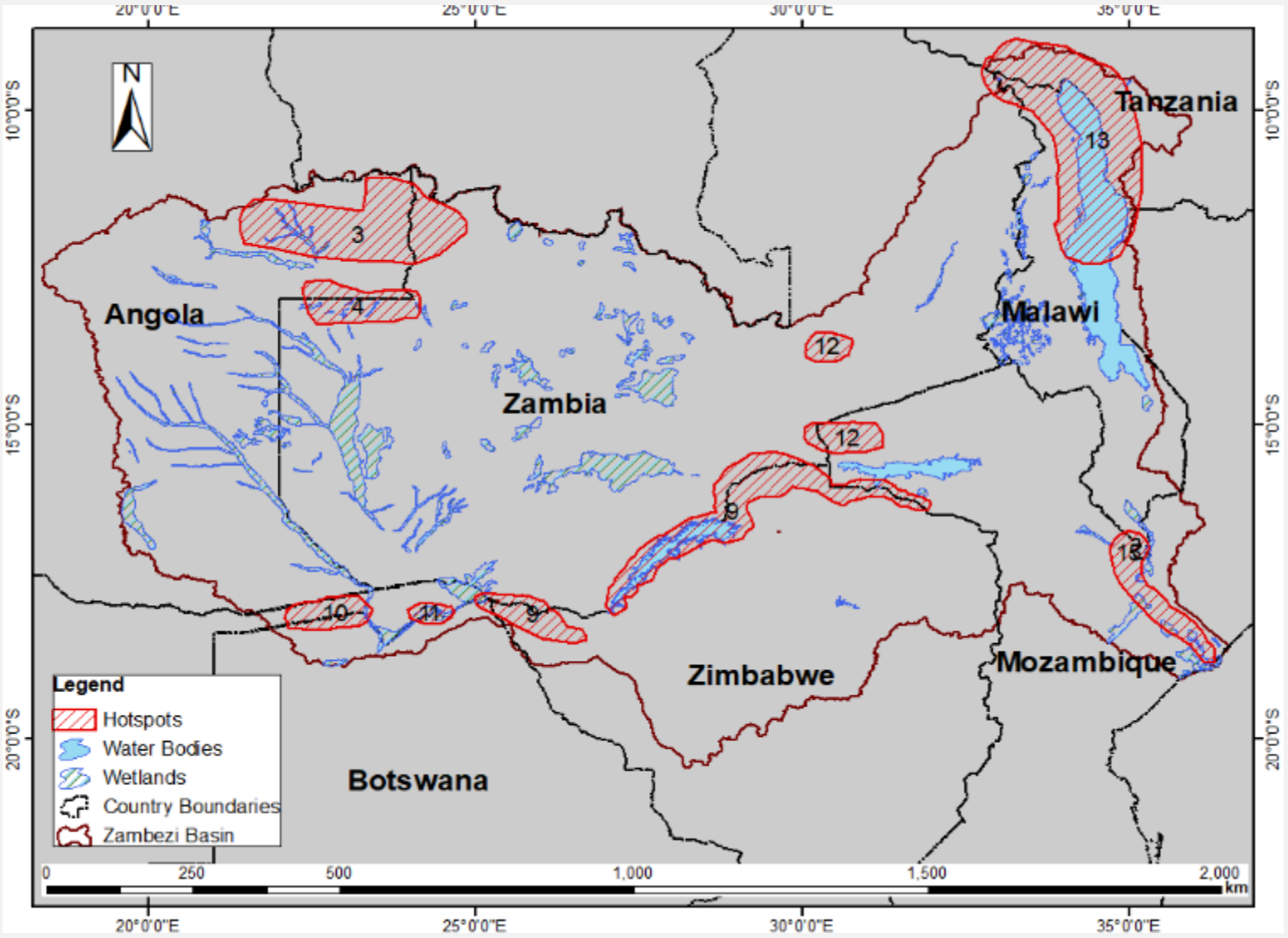
**Lower:** Hippos stuck in a mud riverbed during the dry season



# SELECTED TRANSBOUNDARY HOTSPOTS



ZAMCOM

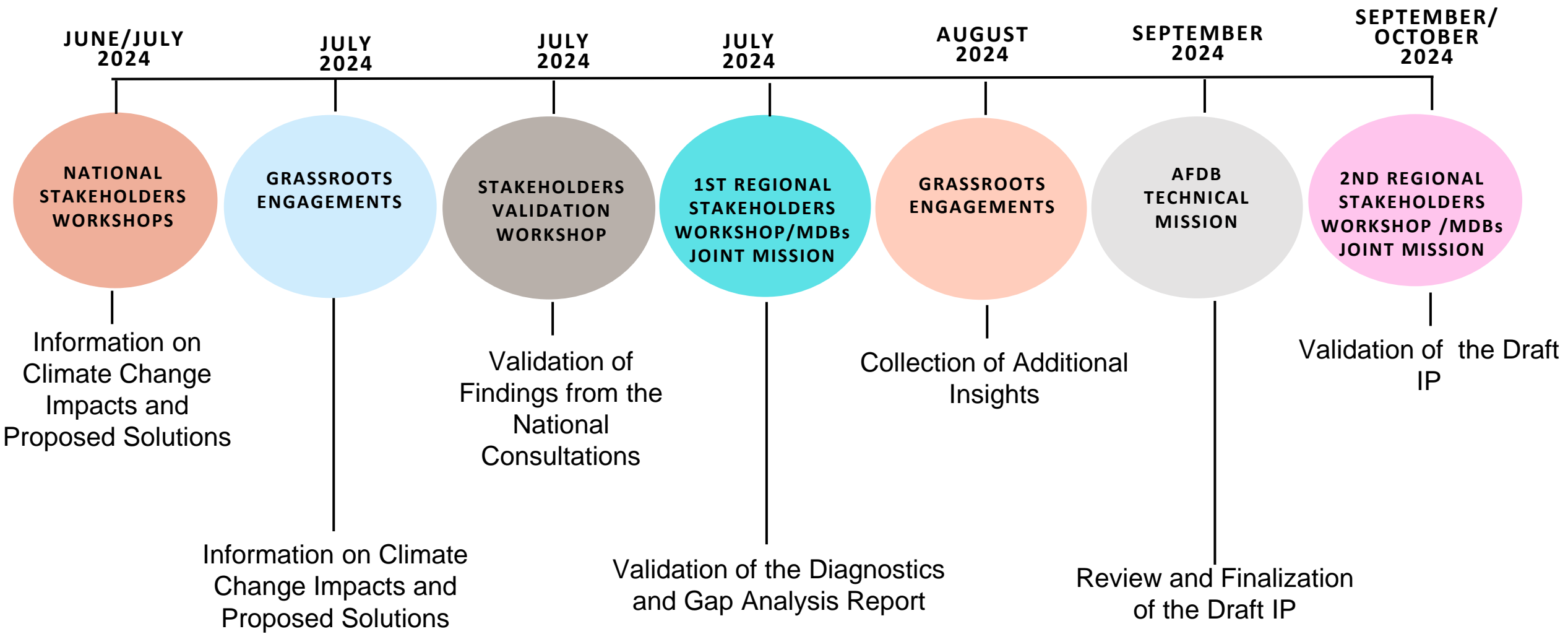


- Regional IP to ensure an integrated, coordinated and holistic approach to management of the Zambezi River Basin shared resources
- Financing: Zambezi Region IP is basin-wide but CIF will finance the 5 CIF-Countries
- 8 transboundary hotspots

# STAKEHOLDERS' CONSULTATION



ZAMCOM



# STAKEHOLDERS' CONSULTATION



ZAMCOM

1



2



3



4



1 - Rapid landscape (Net Mapping) approach

2 - National Stakeholder's Workshop in Malawi

3 - Farmer interview - Tanzania

4 - Interview with bricks maker - Tanzania

# Common themes: Agriculture, Water Management and Energy Sector Adaptation to climate change

## NATIONAL CLIMATE STRATEGIES

Country	Climate Change Strategy
Angola	National Strategy for Climate Change (2018 – 2030)
Botswana	Climate Change Response Policy (2018)
Malawi	National Climate Change Management Policy (2016)
Mozambique	National Climate Change Adaptation and Mitigation Strategy (2013–2025)
Namibia	National Climate Change Policy (2010)
Tanzania	National Climate Change Response Strategy (2021-2026)
Zambia	National Climate Change Policy (2026)
Zimbabwe	National Climate Change Policy (2016)

**NDCs Targets (e.g. Zambia 25% by 2030)**

# REGIONAL CLIMATE STRATEGIES



ZAMCOM

- **SADC Revised Protocol on Shared Watercourse:** sustainable management and utilization of the shared water resources
- **Zambezi Watercourse Commission (ZAMCOM) Agreement:** Regional cooperation on the utilization, development and management of the common waters
- **Intra-African, Caribbean and Pacific Global Climate Change Alliance Plus (GCCA+) Programme:** Climate change adaptation and mitigation
- **Strategic Plan for the Zambezi Watercourse (2018 – 2040):** Pillar 2, 3 and 4

# NATIONAL AND REGIONAL NbS EFFORTS



ZAMCOM

## NATIONAL NbS EFFORTS

Country level NbS projects supported by different financiers (e.g. AfDB, World Bank, IDA, GCF, GEF)

Set aside 18% of their total land area as protected areas (gazetted forests and national parks)

70% of the protected areas are transboundary: Transfrontier Conservation Areas (TFCAs)

## REGIONAL NbS EFFORTS



Programme for Integrated Development and Adaptation to Climate Change in the Zambezi River Basin (PIDACC Zambezi)



Strengthening Zambezi River Basin Management towards Climate Resilience and Ecosystem Health

# IP DESCRIPTION: GOAL AND OBJECTIVES



ZAMCOM



**Ob 1:**  
**Building an evidence-based design of NbS in the basin**

**Ob 2:**  
**Strengthening the enabling environment for sustainable uses of land, water and other natural Resources**

**GOAL:**  
**Contribute to the transformation of the Zambezi Region through NbS that accelerates climate actions to strengthen the resilience of communities and landscapes and to enhance mitigation**

**Ob 3: Strengthening nature-based resilience of landscapes and livelihoods in the basin**

**Ob 4:**  
**Enhancing nature-based mitigation through augmenting the ability of ecosystems to absorb and store carbon**

# IP DESCRIPTION: NbS COMPONENTS



ZAMCOM

1

**Sustainable Forest  
Restoration and  
Management**

2

**Protection of High-Carbon  
Stocks**

3

**Management and  
Restoration of Freshwater  
and Coastal Ecosystems**

4

**Management of Wildlife  
Protected Areas**

5

**Strengthening the  
Resilience of Local  
Communities and  
Agricultural Productive  
Systems**

6

**Strengthening the  
enabling environment**



# NbS COMPONENTS IN TARGETED HOTSPOTS

Hotspot	Forest	High-Carbon	Freshwater and Coastal	Wildlife Protected Areas	Agricultural	Enabling Environment
Cazombo/Mwinilunga (3)	√	√	√		√	√
Cavuma/Manyinga (4)	√	√	√		√	√
Livingstone/Kariba/Tete (9)	√	√	√	√	√	√
Kavanga/Zambezi Region (10)	√	√	√		√	√
Katima Mulilo/ Kasane (11)	√	√	√	√	√	√
Luangwa/Zumbo (12)	√		√	√	√	√
Lake Banks (13)	√	√	√	√	√	√
Zambezi Delta (15)	√	√	√		√	√

# GESI CONSIDERATION



ZAMCOM

## Inclusive Participation



Active involvement of women, youth and PWDs in **decision making**

## Promote Alternatives livelihoods



Aquaculture (e.g. fish farming); agro-processing and value addition

## Training Initiatives



Agroforestry, Ecotourism, climate-smart agriculture

## Targeted Financial Mechanisms



Enhance access to finance marginalized groups

# IP ALIGNMENT TO CIF INVESTMENT CRITERIA



## POTENTIAL FOR TRANSFORMATIONAL CHANGE

- **Relevance:** Relevant and aligned to the regional and national priorities and NDCs (e.g. ZSP)
- **Systemic Change:** Fundamental changes in governance, social and hydrological systems (**e.g. Increased forest cover, enhanced institutional capacity**)
- **Scale:** Climate-Smart Agriculture, scaled beyond the hotspots
- **Adaptive Sustainability:** Nature-based enterprises (e.g. eco-tourism, sustainable fisheries) will generate revenue while protecting ecosystems

## JUST TRANSITION CONSIDERATIONS

### Unlocking opportunities through low-carbon growth

- **Strengthen Livelihoods** (climate-smart agriculture, secures incomes)
- **Green jobs** (ecotourism, sustainable fisheries and renewable energy)
- **Build resilient Communities** (protecting homes, water sources, infrastructure)
- **Equitable Access to Finance** (benefit vulnerable communities)

# PRIVATE SECTOR ENGAGEMENT



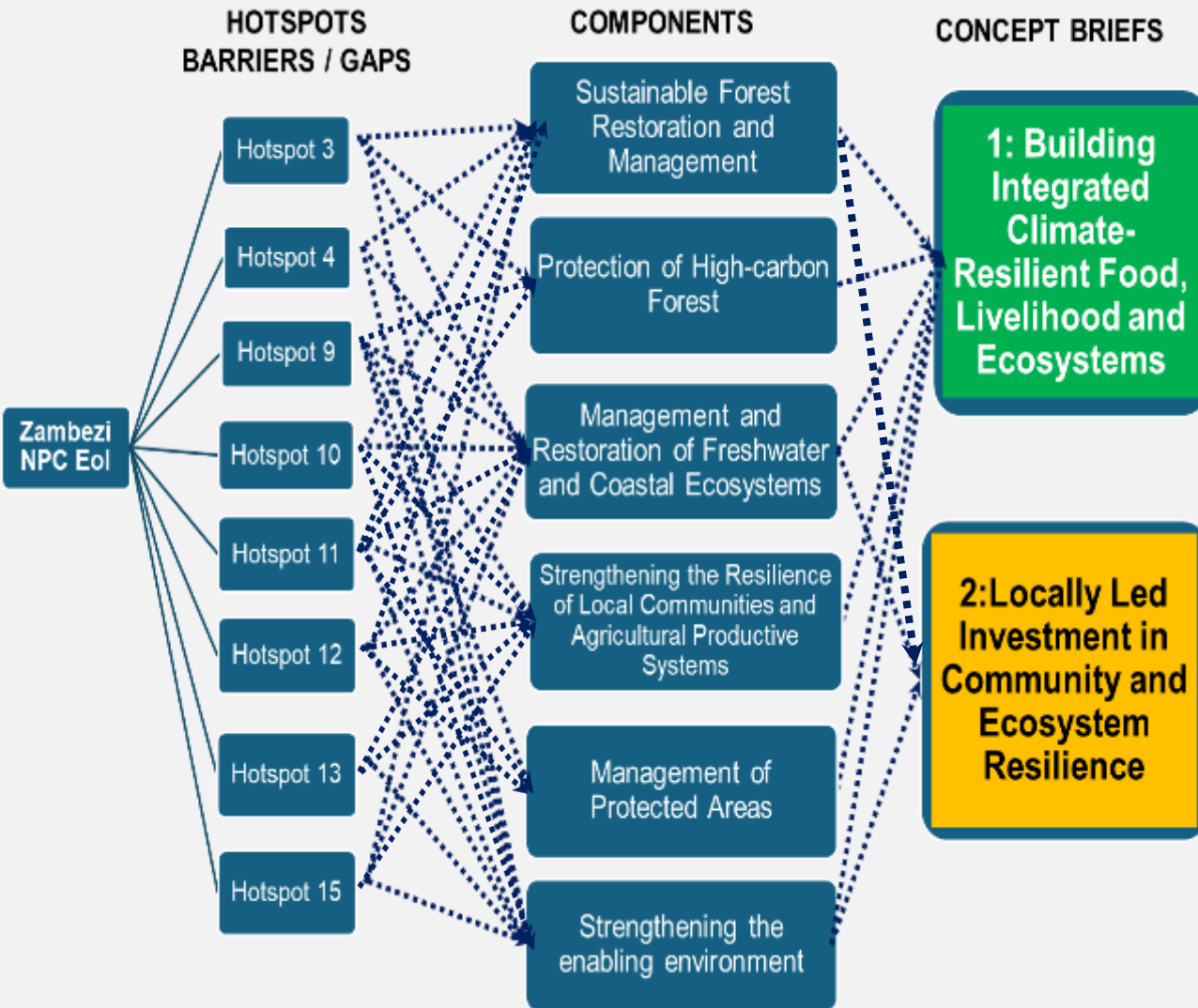
- **Regional Timber Verification and Trade Authority:** Reduce illegal logging and enable sustainable forest management
- **Ecotourism and Hospitality:** Eco-lodges and adventure tourism activities (E.g. marathons across conservation areas)
- **Sustainable Aquaculture:** Modern fish hatchery facilities



# PROGRAMME CONCEPTS



ZAMCOM



- 2 programmes designed from 6 components and based on MDBs focus areas
- **Programme 1 (AfDB)**
  - 8 countries
  - Promote integrated natural resources management and strengthen the resilience of local communities
- **Programme 2 (World Bank)**
  - Scale-up the ongoing project in Malawi
  - Enhance district-level disaster risk management planning
  - Strengthen EWS and hydrometeorological capacity in the Region

# FINANCING PLAN



ZAMCOM

Concept/Programme Name	MDB Funding Amount (USD million)				CIF Funding Amount (USD million)					(US\$ million)
	Name	Loan	Grant	Total	PPG	Loan	Grant	MPIS	Total	
<b>Concept 1:</b> Building Integrated Climate-Resilient Food, Livelihoods and Ecosystems in Zambezi River Basin (BREFOLE-ZRB)	AfDB	125.40	107.64	<b>388.04</b>	1.00	11.68	26.32	1.40	<b>40.40</b>	<b>428.44</b>
	AfDB Partners	36.00	119.00							
<b>Concept 2:</b> Locally-Led Investments in Community and Ecosystem Resilience in Malawi with Regional Collaboration	World Bank	0.00	255.00	<b>255.00</b>	0.00	0.00	19.00	0.95	<b>19.95</b>	<b>274.95</b>
	<b>Total</b>	<b>161.40</b>	<b>481.64</b>	<b>643.04</b>	<b>1.00</b>	<b>11.68</b>	<b>45.32</b>	<b>2.35</b>	<b>60.35</b>	<b>703.39</b>

**US\$ 703.39 million is based on the available resources**



*win-win cooperation / cooperacao, ganhas tu, ganho eu*



# POTENTIAL RISKS AND MITIGATION MEASURES



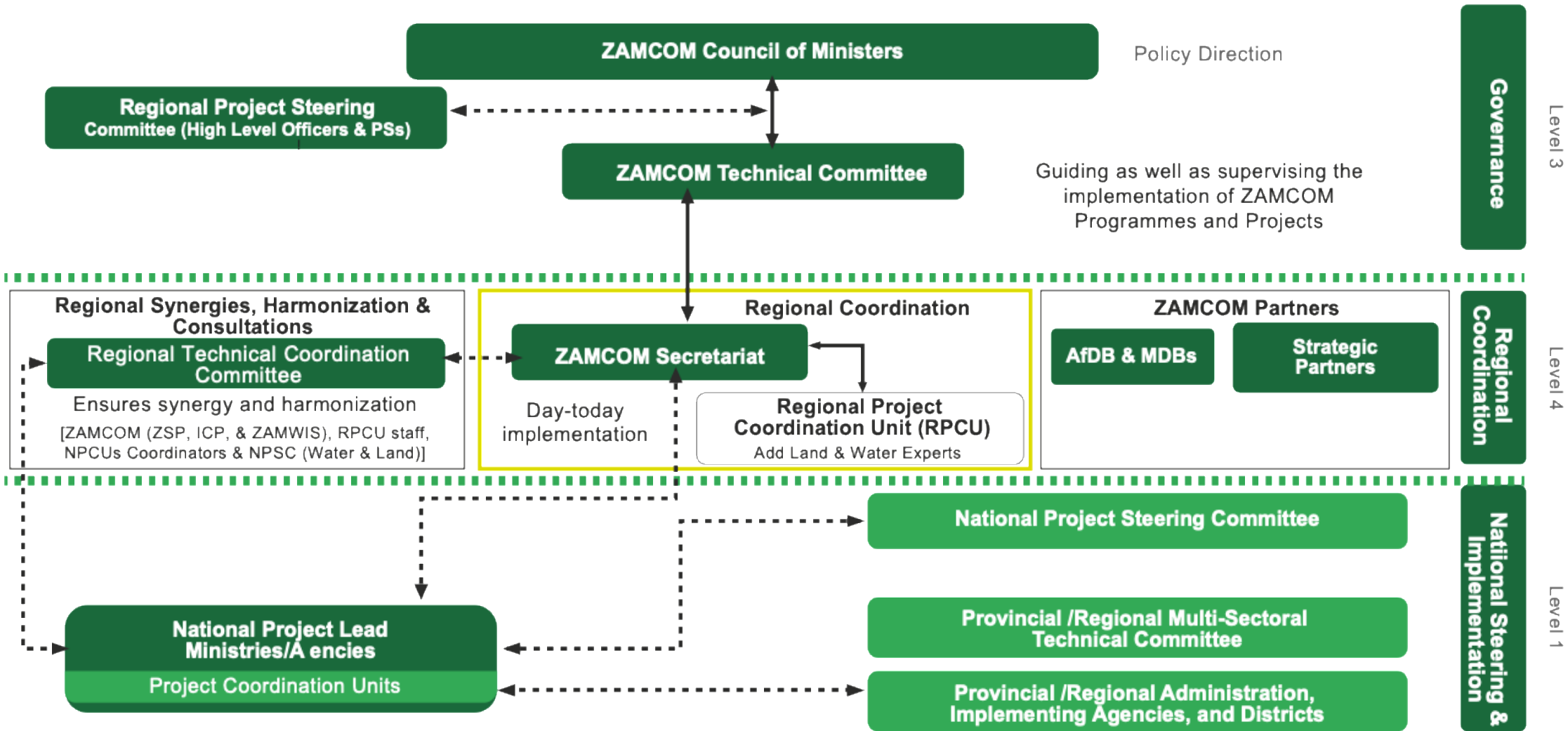
Risk Category	Examples	Likelihood of Happening	Mitigation Measures
Legal and Regulatory Risks	Lack of frameworks or enforcement	L	Develop harmonized policies, legislation and regulatory frameworks
Financial Sustainability	Private sector may not fully engage with some of the (NbS)	L	<ul style="list-style-type: none"> <li>• Supportive laws, regulations and incentives to encourage private sector involvement</li> <li>• ZAMCOM, MDBs and Partners continue jointly marketing the IP</li> </ul>
Social welfare	risks associated with livelihood losses	L	Retraining programs to prepare individuals for new job markets



# IMPLEMENTATION ARRANGEMENTS



ZAMCOM



# EXPECTED OUTCOMES AND SAMPLE INDICATORS



OUTCOMES	INDICATORS
<b>Mitigation Outcomes</b>	
Strengthened land, fisheries and forest governance	Number of policies: <b>Regional: 1; National: 8</b>
Improved Forest management	GHG emissions reduced/avoided: <b>303 million tCO2 eq</b>
<b>Adaptation Outcomes</b>	
Improved ecological resilience	Area of land covered by climate responsive natural resource management practices: <b>1.7 million Ha</b>
Improved community resilience to climate change	Number of people receiving livelihood benefits: <b>2.3 million (50% women)</b> Number of green jobs created: <b>19,958 (50% women, 20% Youth)</b>
<b>Co-Benefits</b>	
Mobilized public and private capital	Volume of co-finance leveraged: <b>Total - US\$643.04m (AfDB and World Bank)</b>

# THANK YOU!



ZAMCOM



Magnificent Aerial View of Victoria Falls along Zambezi River  
at Zambia / Zimbabwe Border



AFRICAN DEVELOPMENT BANK GROUP  
GROUPE DE LA BANQUE AFRICAINE  
DE DEVELOPPEMENT



CLIMATE  
INVESTMENT  
FUNDS



*win-win cooperation / cooperacao, ganhas tu, ganho eu*

