



Nature, People and Climate Program-Investment Plan for Kenya

Presented by: State Department for Environment and Climate Change
28th February 2025

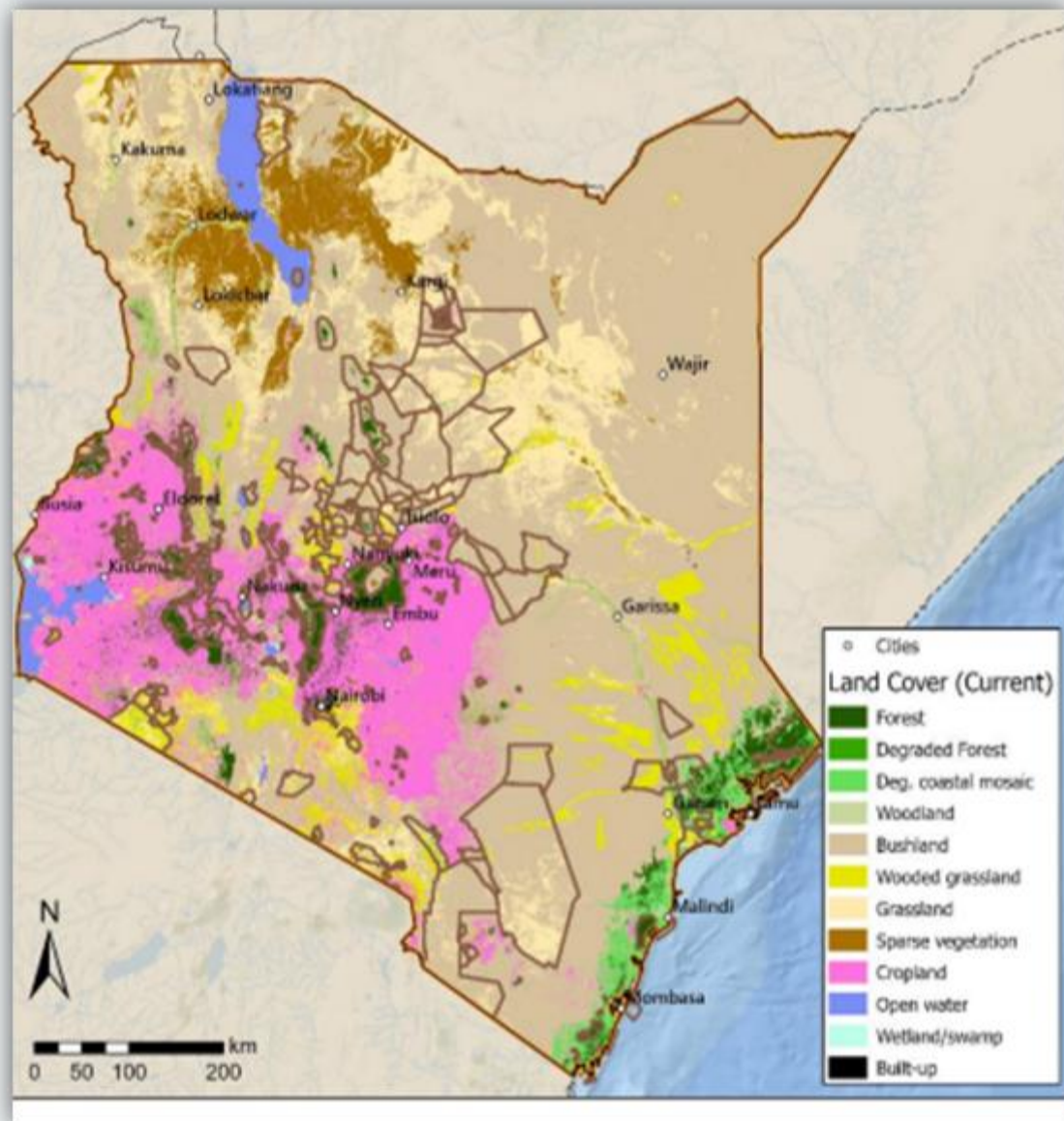


An aerial photograph of a wide river valley. The river is a prominent, light-colored channel running vertically through the center of the frame. On either side of the river, there are lush green fields, some of which appear to be agricultural plots with distinct rows. The background shows rolling hills and a dense forest under a clear sky. The overall scene depicts a rural, agricultural landscape.

COUNTRY CONTEXT



Country Context



□ Kenya's has **diverse ecosystems**; forests, wetlands, rangelands, agro-ecosystems

□ **NR significance:**

- Employment, food security & natural resources for 54 Million people
- 35% of Kenya's wealth
- 42% contribution to the GDP
- 70% of total employment
- Water security (75% water originates from forest areas- water towers)

□ **Vulnerable to climate change**

- 152 out of 181 countries in the 2019 ND-GAIN Index.
- Droughts & floods main hazards impacting lives and livelihoods – frequent cycles



Key Challenges related to Kenya's Ecosystems



Land degradation affecting 40% of the land area

- 17,000ha of forest annually
- Costs the country USD 1.2B PA

Drivers of degradation- increasing population, poverty, unsustainable land management practices

Effects of degradation- GHG emissions, declining agricultural productivity, biodiversity loss

Climate Change

- Costs 3-5% of GDP annually
- 2021-2023 droughts left 6.4m Kenya's food insecure
- Loss of livelihoods esp for IPLCs
- Agriculture and food systems
- Water insecurity





Government Response to CC & Ecosystem Restoration



POLICY RESPONSES

- Vision 2030- MTP IV
- Bottom-Up Economic Transformation Agenda
- Nationally Determined Contribution
- Kenya Climate Smart Agriculture Strategy 2017-2026
- National Landscape and Ecosystem Restoration Strategy

KEY COMMITMENTS

- Reduce 32% of GHGs by 2030
- Restore 10.6Million Ha- NLMERS

NBS PROJECTS by GOK, Private Sector and INGOs





Key Ongoing Programmes/ Projects



Kenya Watershed Improvement Programme (KEWASIP)

• WB



Financing Locally-Led Climate Action (FLLoCA):

• WB, SIDA, DANIDA, GIZ



Upper Tana-Nairobi Water Fund

• GEF



Integrated Natural Resources Management Project (INReMP)

• IFAD



Green Zones Development Support Project II

• AfDB



Building Climate Resilience for Food and Livelihoods in the Horn of Africa (BREFOL)

• AfDB



Current Gaps in CC & Restoration Efforts



Scale of restoration ambitions requires huge investments and coordinated interventions

- Funding gap:
 - i. NDC commitments- **USD 62billion** (13% domestic sources & 87% international sources)
 - ii. **NLERS-USD 10Billion**
- Limited coordination, impact and scalability of Current NbS interventions
- Limited private sector investments

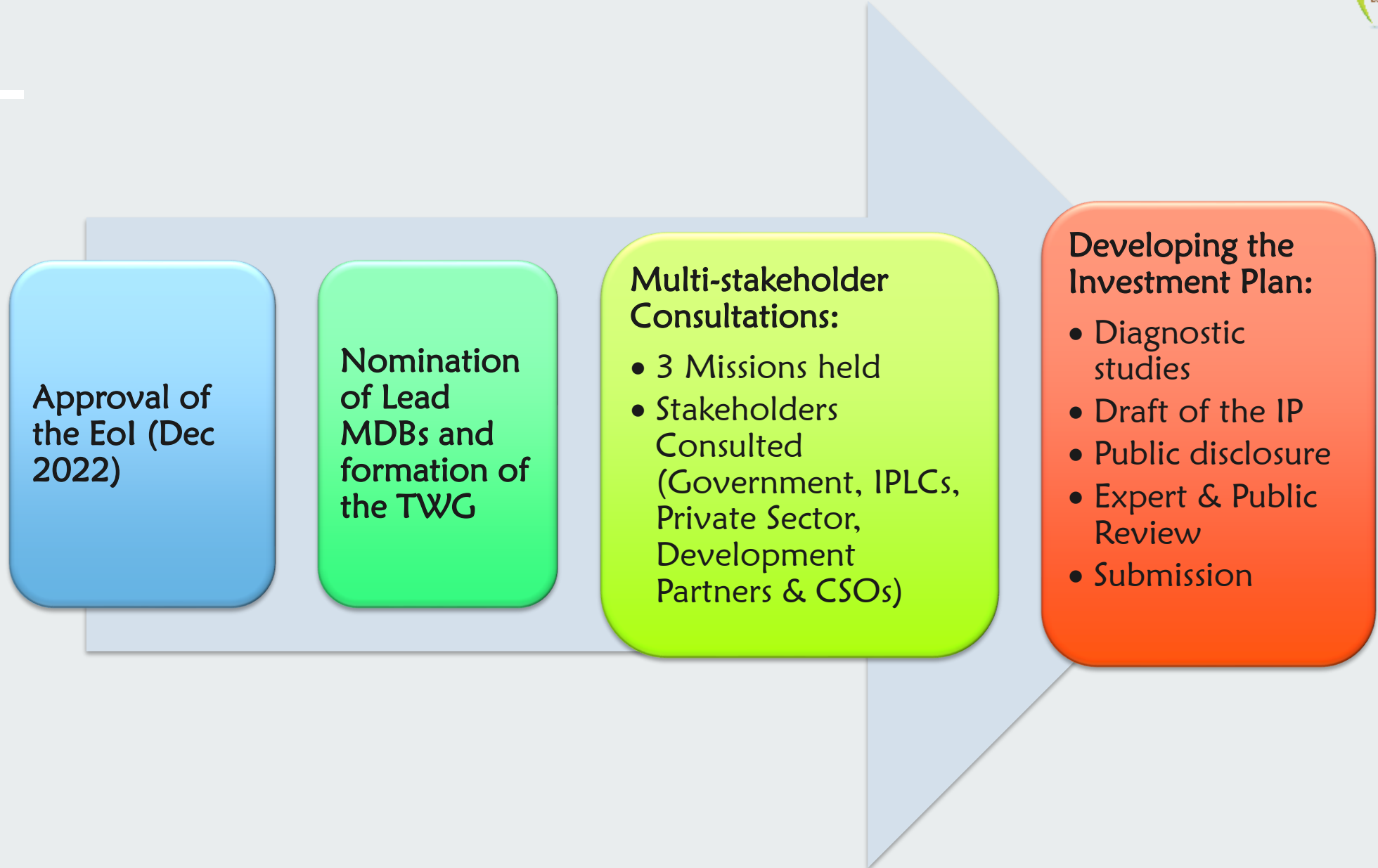


A wide-angle photograph of a dry, open landscape. In the foreground and middle ground, a herd of sheep, some white and some black, are scattered across the reddish-brown soil. A person in a blue dress stands in the background, looking towards the camera. The background features a line of green bushes and a small building. A tall communication tower is visible on the right side of the horizon under a blue sky with scattered white clouds.

ABOUT THE KENYA NPC-IP



IP Preparation Process



Stakeholder Consultations Cont...





Kenya's NPC-IP Programme Description



Program Aim

- Support Kenya's transition to a **low carbon climate resilient development pathway** for **inclusive and gender responsive growth**.

Program Goal

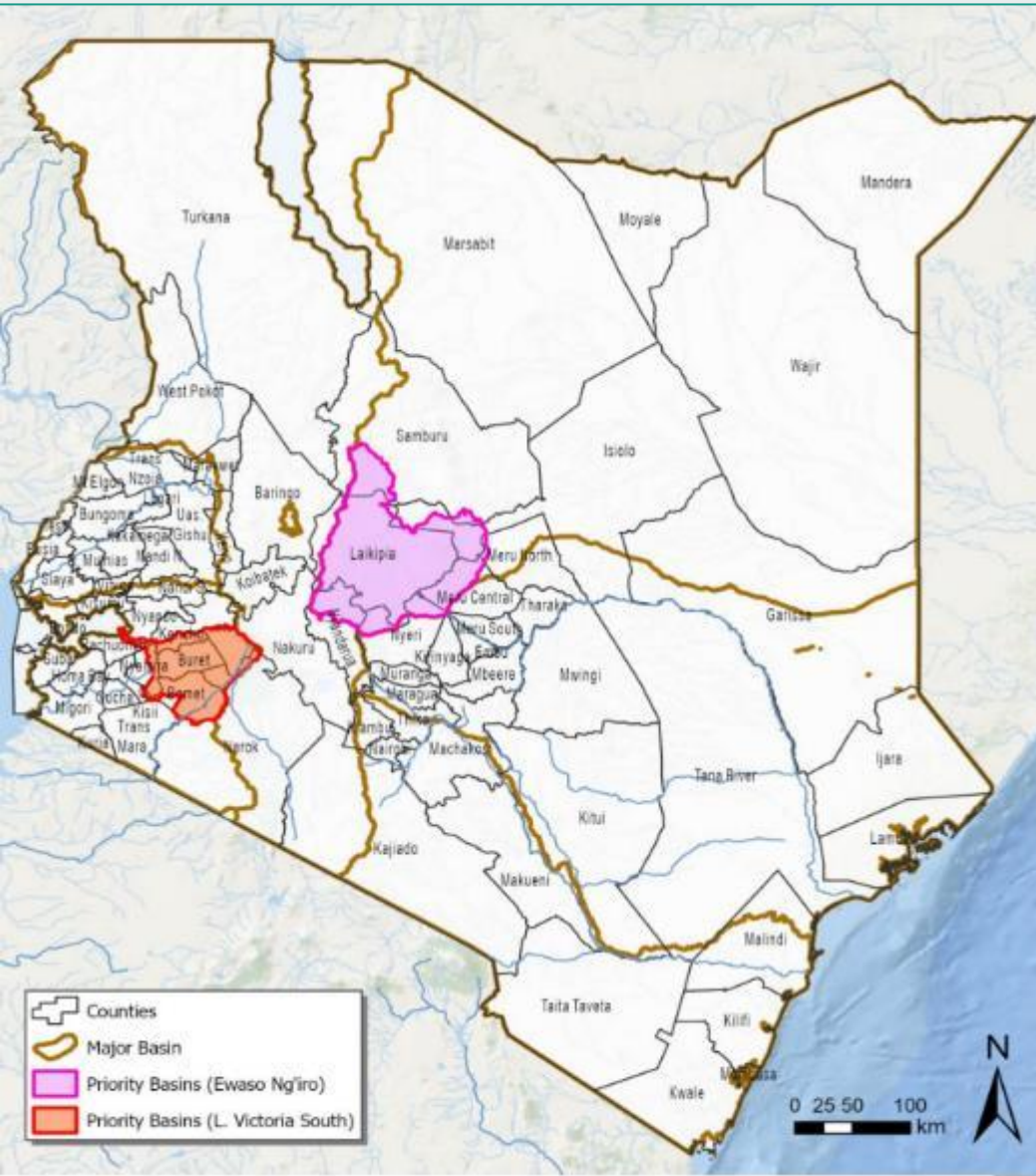
- Invest in **high integrity NbS** interventions that simultaneously address **CC adaptation & mitigation, biodiversity conservation and Livelihood improvement**

Program Objectives:

- Reduce **GHG Emissions**
- Improve **Adaptive Capacity** and **Climate Change resilience**
- Improve **Biodiversity** conservation
- **Policy** and institutional strengthening & **Capacity building**



Prioritization of the Targeted Landscapes



Two landscapes targeted:

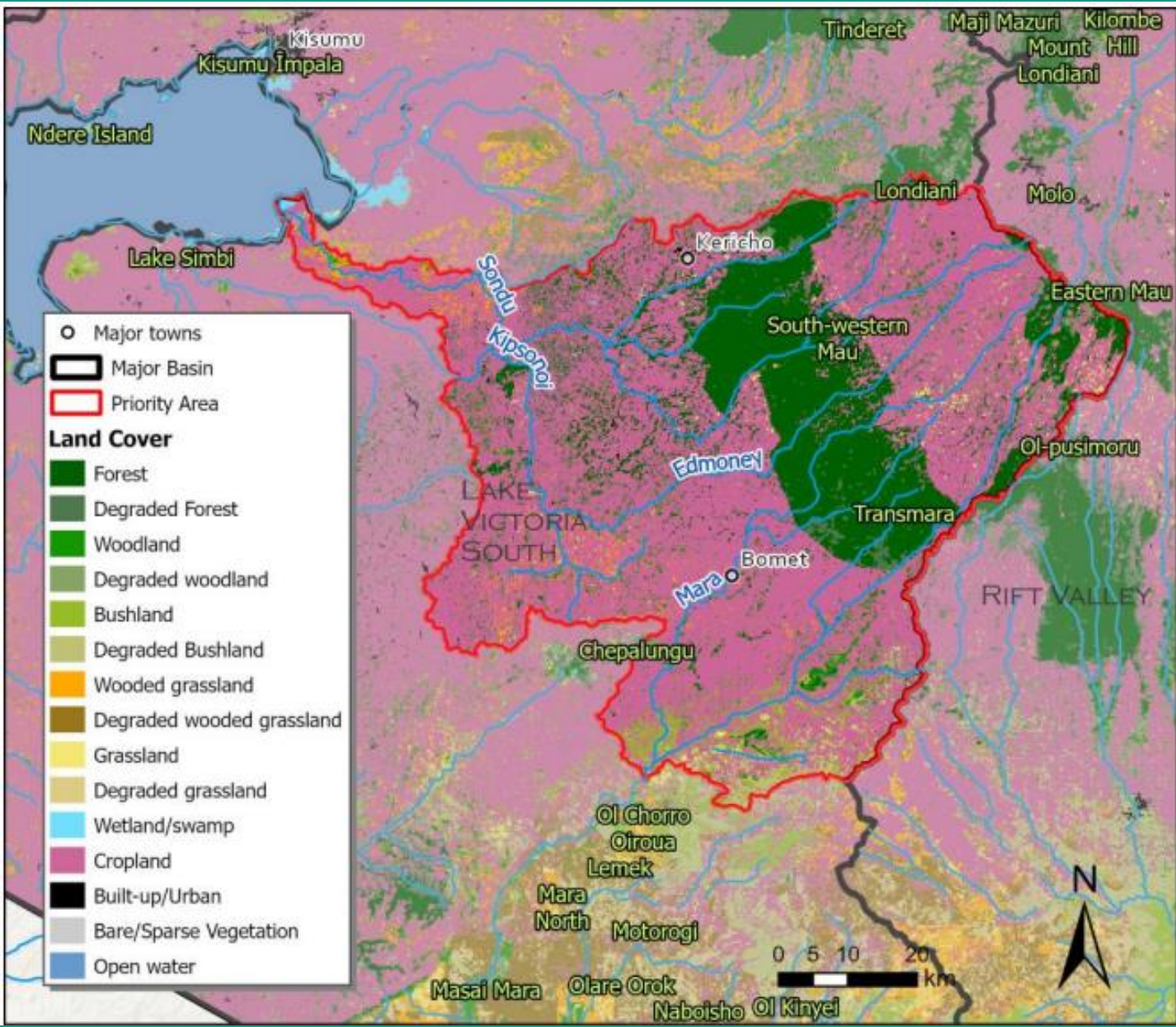
1. Ewaso Ng'iro North
2. L. Victoria South

Multi Criteria Analysis used in prioritization:

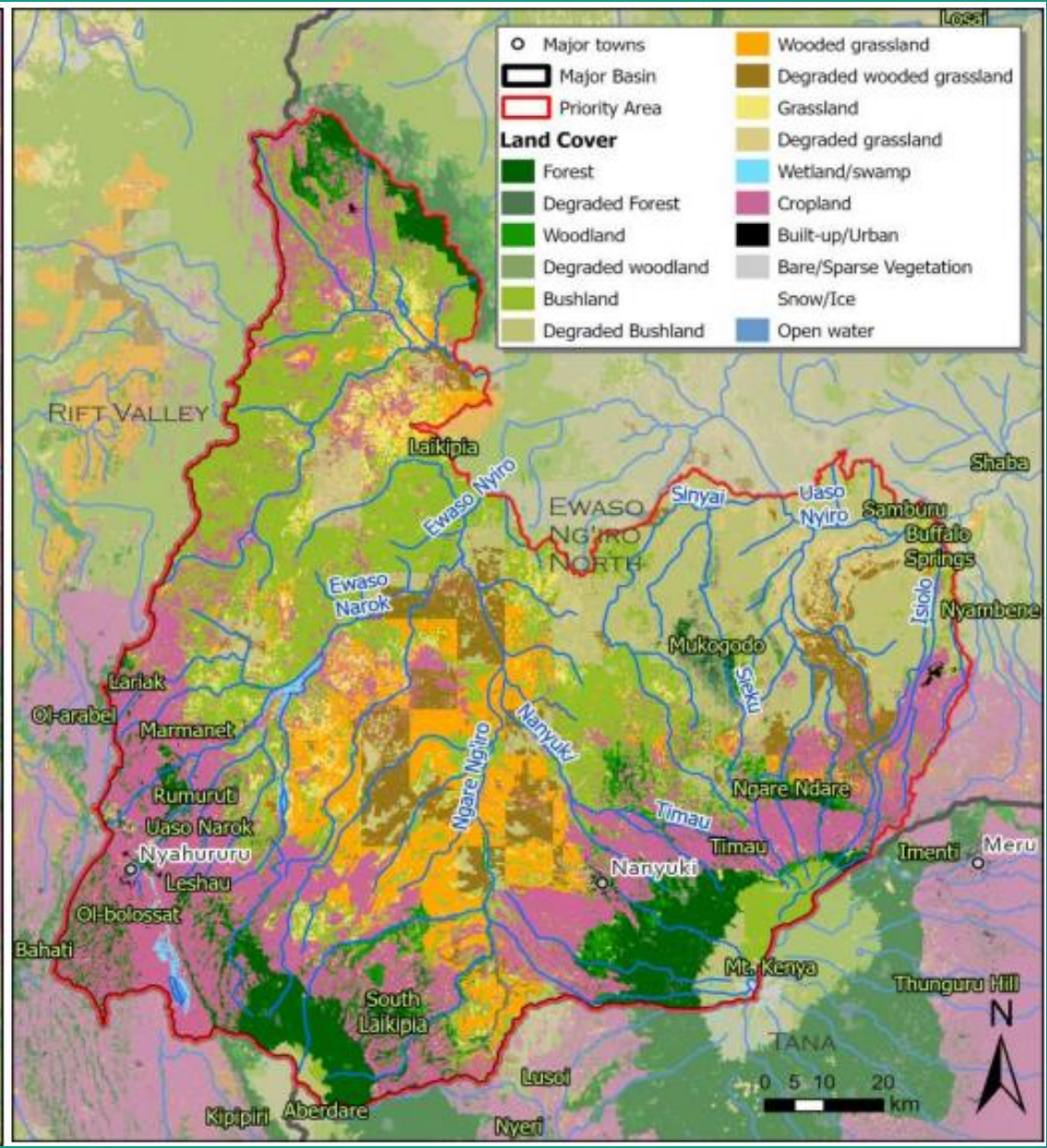
- Return on Investment
- Climate change vulnerability
- Biodiversity loss
- Population density
- Poverty rate
- Ongoing/upcoming programs

CIF resources provide opportunity to test the innovative approach to promoting NbS in two diverse landscapes for scaling to other ecosystems

Lake Victoria South Basin



Ewaso Ng'iro North Basin





Programme Components



COMPONENTS

DESCRIPTION

Nature Capital



Restoration & sustainable management of key ecosystems

- Restoration of forests, wetlands & rangelands.
- Improved water governance & riparian protection.
- Strengthening community-led conservation efforts.

Nature People



Regenerative agriculture, sustainable rangeland management & alternative livelihood support

- Sustainable agriculture & agroforestry.
- Climate-smart grazing systems & alternative livelihoods.
- Value chain development.

Nature Ventures

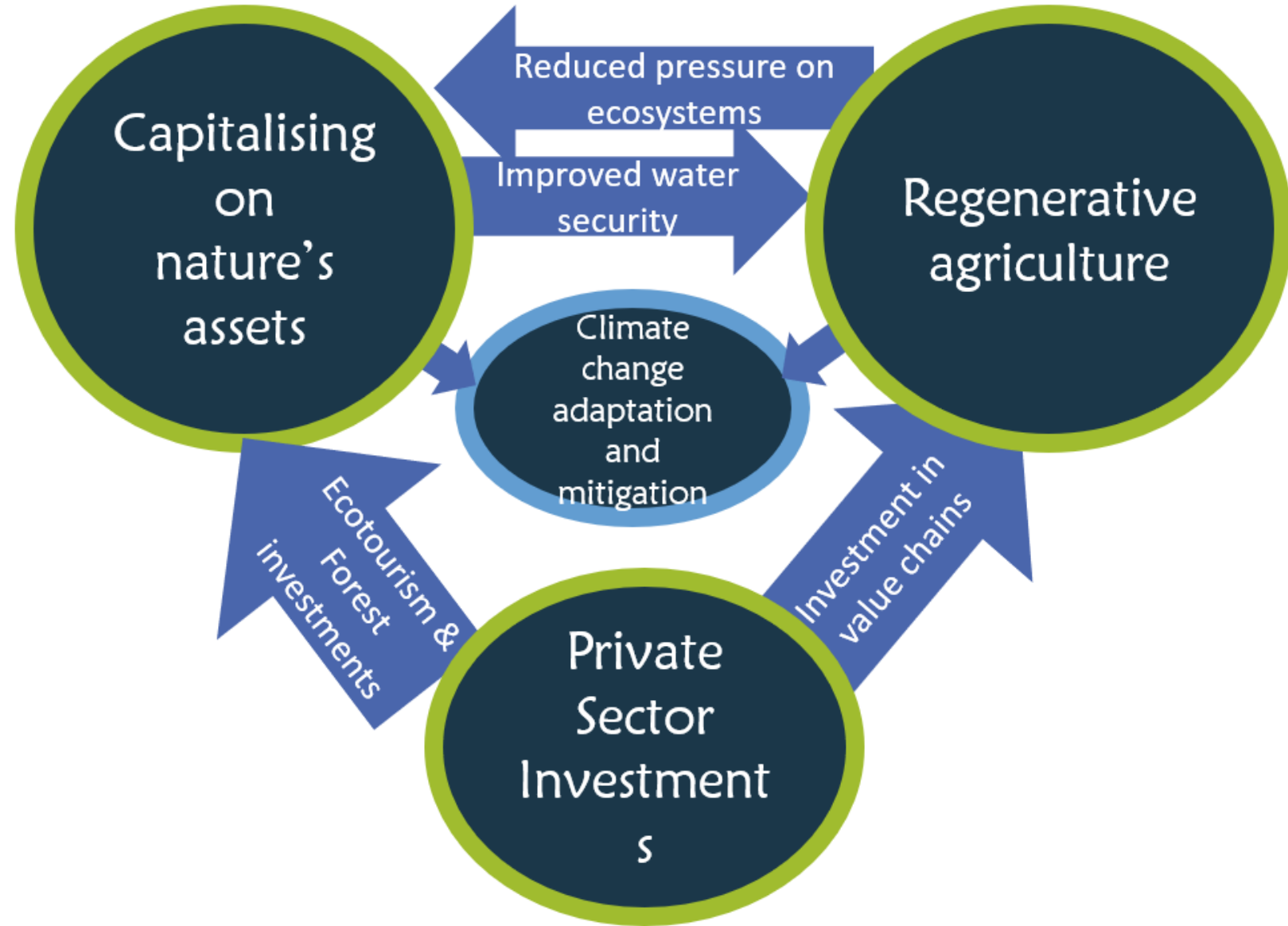


Incentivize private sector investment in NbS

- Developing ecotourism & sustainable agribusiness.
- Enhancing carbon & biodiversity credit markets.
- Creating financial incentives for NbS investments.

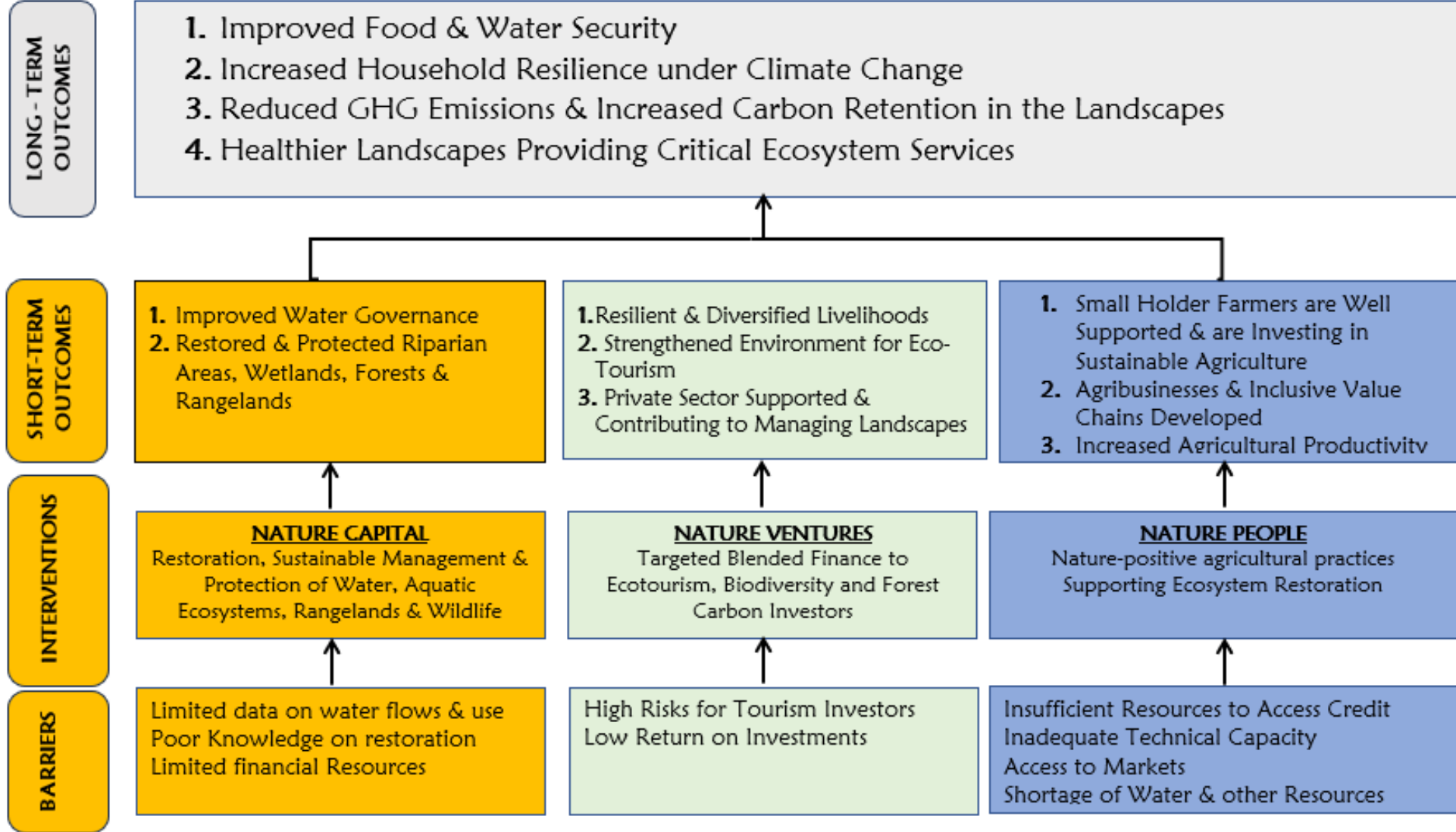


Components Synergies & Integration





Theory of Change



CHALLENGES:
Degradation of natural resources; Biodiversity Loss and Ecosystem Services; HWC; Vulnerability to Climate Change; Declining Crop and Livestock Productivity; Limited Opportunities for Men, Women & Youth



Programme Financing



NPC IP estimated at **\$155Million** (34M CIF & 121M co-financing) to scale up NbS investments.

PROJECT CONCEPT	MDB	CIF	CO-FINANCE	PARALLEL FINANCING
Nature Capital	WB	12.50	55.50	150
Nature People	AfDB	13.00	33.70	65.4
Nature Ventures	IFC	8.50	32.00	
TOTAL		34.0	121.20	215.4

NB:

- Parallel additional investments **USD 215.4Million**
- CIF to directly disburse dedicated grant of **USD 4 Million** to IPLCs

Key Outcomes of the IP



Improved Management of Natural Resources



Reduced Greenhouse Gas Emissions



Improved Livelihoods of Local Community & Indigenous Peoples'



Strengthened Enabling Environment for Sustainable Uses of Land & Other Natural Resources



Increased Mobilization of Public & Private Capital



CROSS CUTTING CONSIDERATIONS



Gender Equality and Social Inclusion



NPC INVESTMENT PLAN PROJECTS

Address gender equality and social inclusion during preparation and action stages.

1

ACCESSIBLE CAPACITY BUILDING

Ensure activities are available to both men and women.

3

SUPPORT WOMEN-LED INITIATIVES

Reserve financing for partnerships that promote gender equality.

5

UNDERSTANDING GENDERED ROLES

Focus on women's perceptions, needs, and engagement methods.

2

PROMOTING GENDER BALANCE

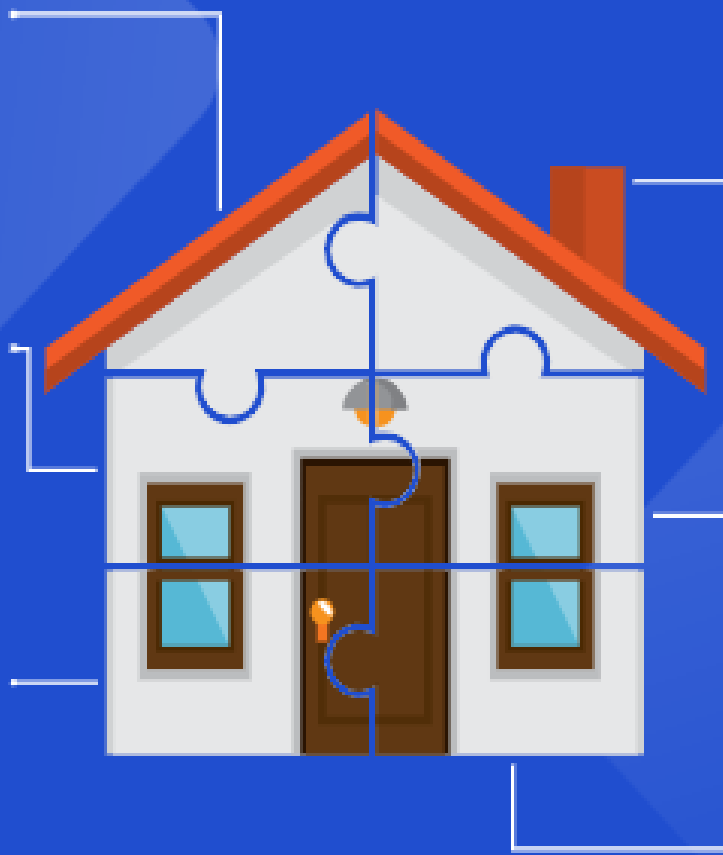
Strengthen conservancy governance structures with gender-sensitive decision-making.

4

MONITORING AND EVALUATION

Indicators must be aggregated by gender.

6





Engagement of IPLCS

IPLCs represented in the TWG through MPIDO

Consulted during the Discover, Scoping and Joint Missions

Further engagements during the project preparation phase

Dedicated Grant Mechanism



THANK YOU

