



# FOREST INVESTMENT PLAN FOR ECUADOR

Forest Investment Program (FIP) Sub-Committee

Washington, DC.  
December 2017

With the support:



# THE CONTEXT OF DEFORESTATION IN ECUADOR

The continental surface of Ecuador

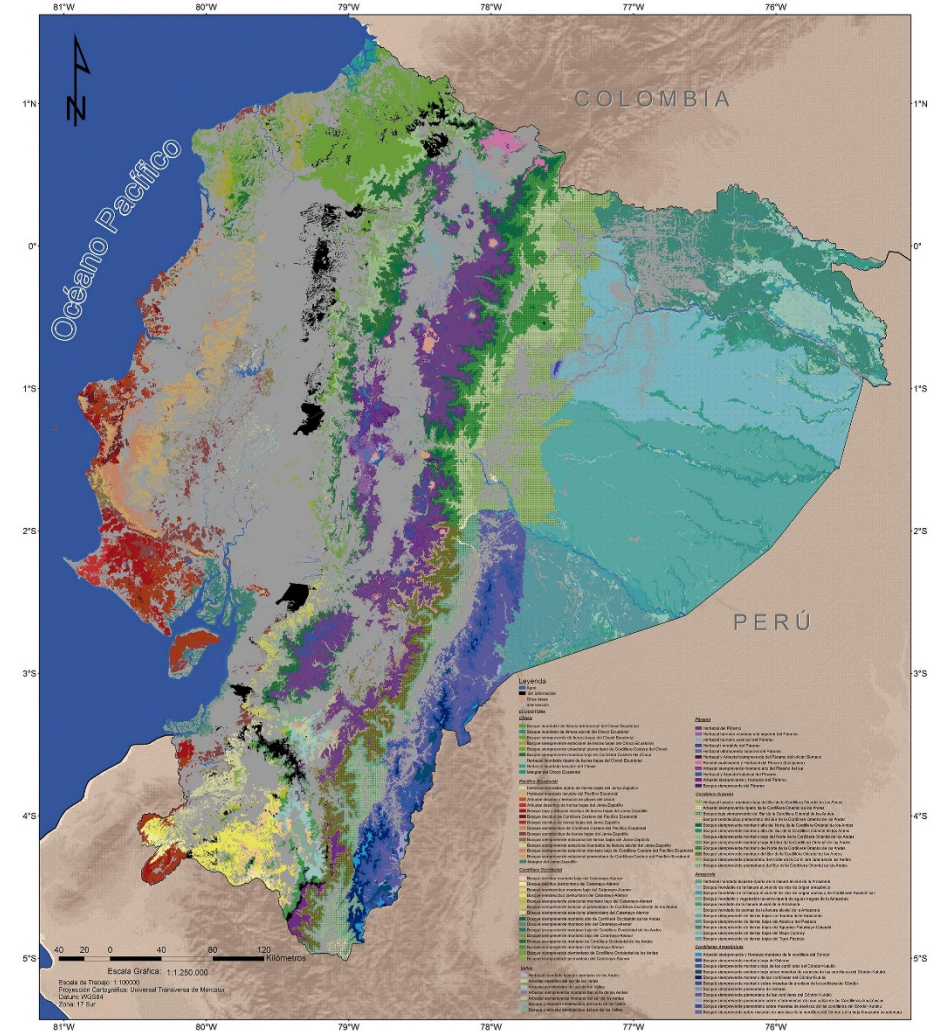
24,898,059  
hectares

51,2%

Native Forest

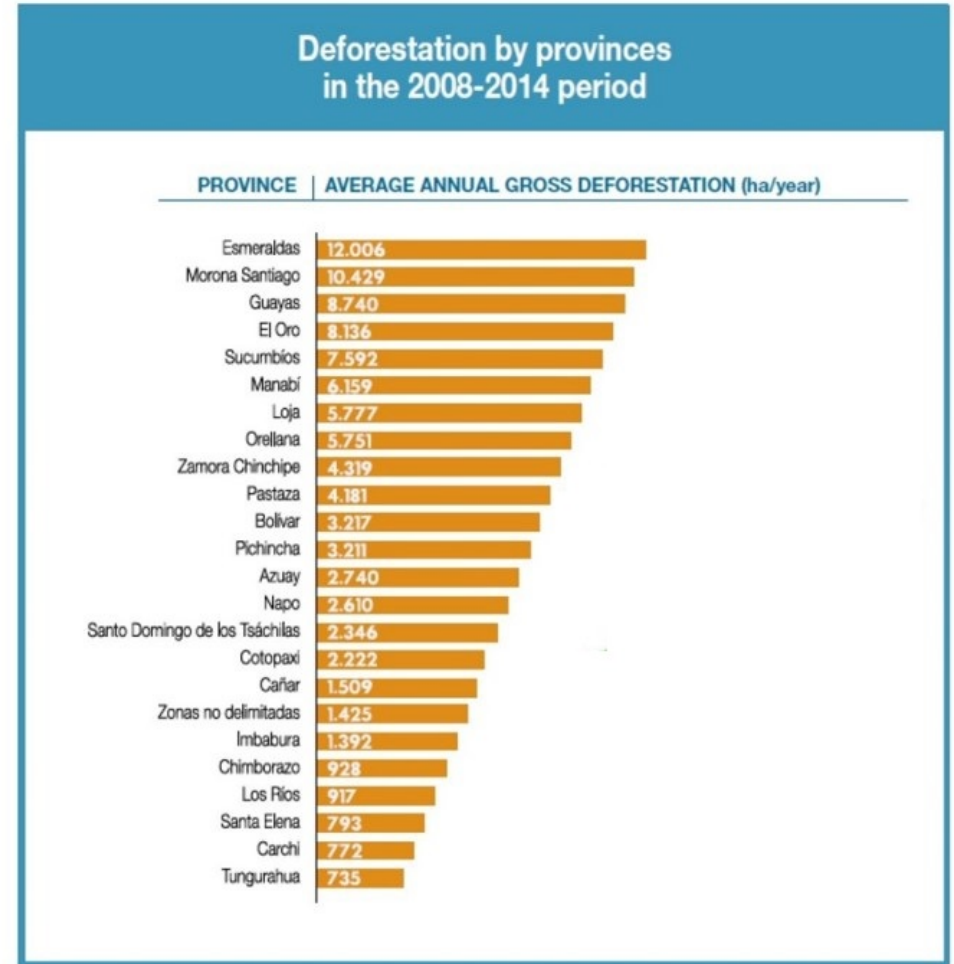
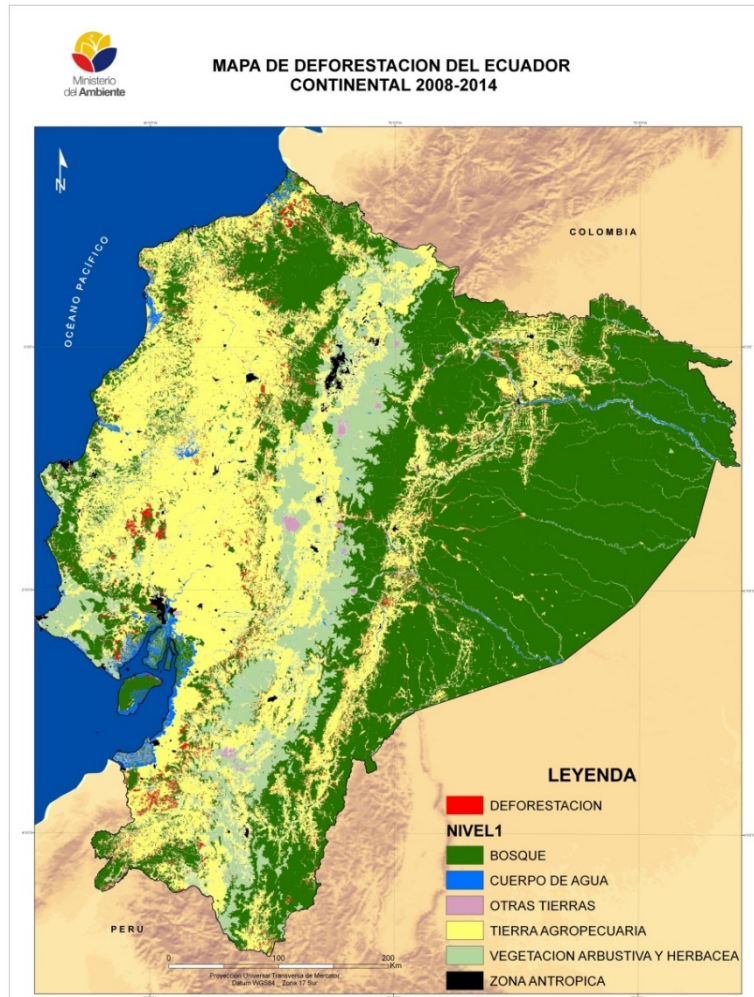
12,753,387  
hectares

Source: Historical Map of Deforestation, MAE 2015



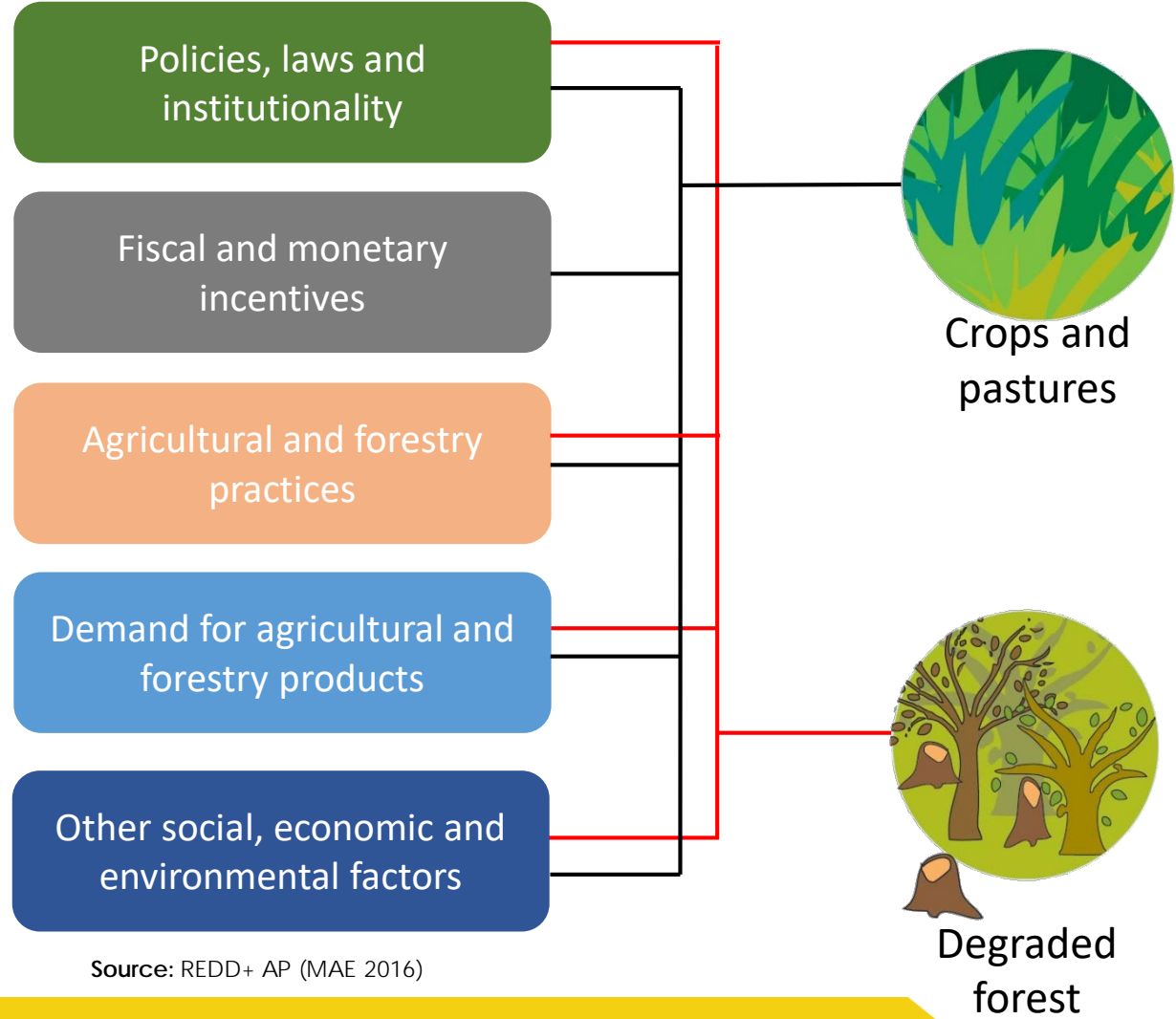
# DEFORESTATION IN ECUADOR

Gross deforestation by province (2008-2014)



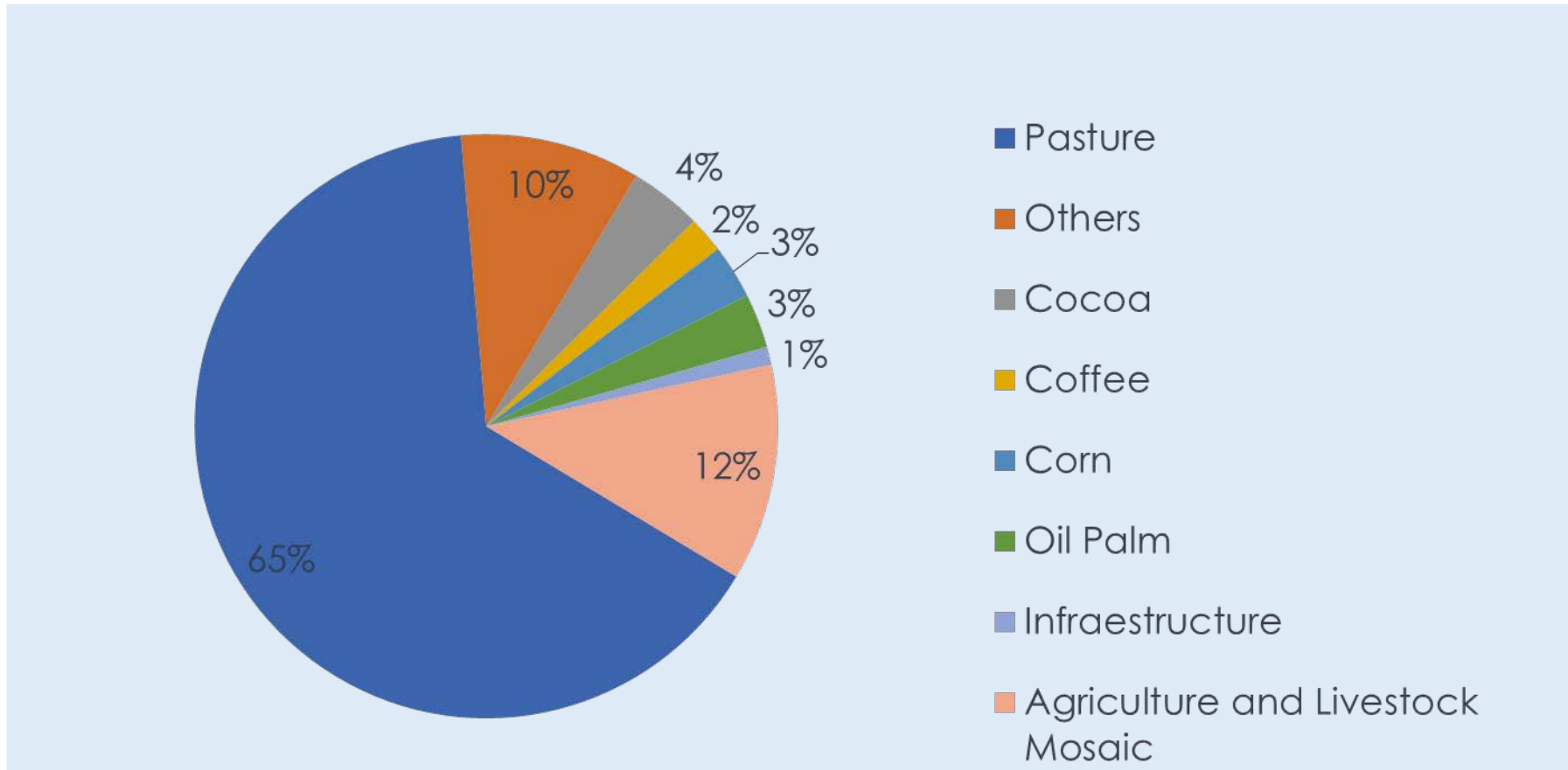


# DRIVERS OF DEFORESTATION



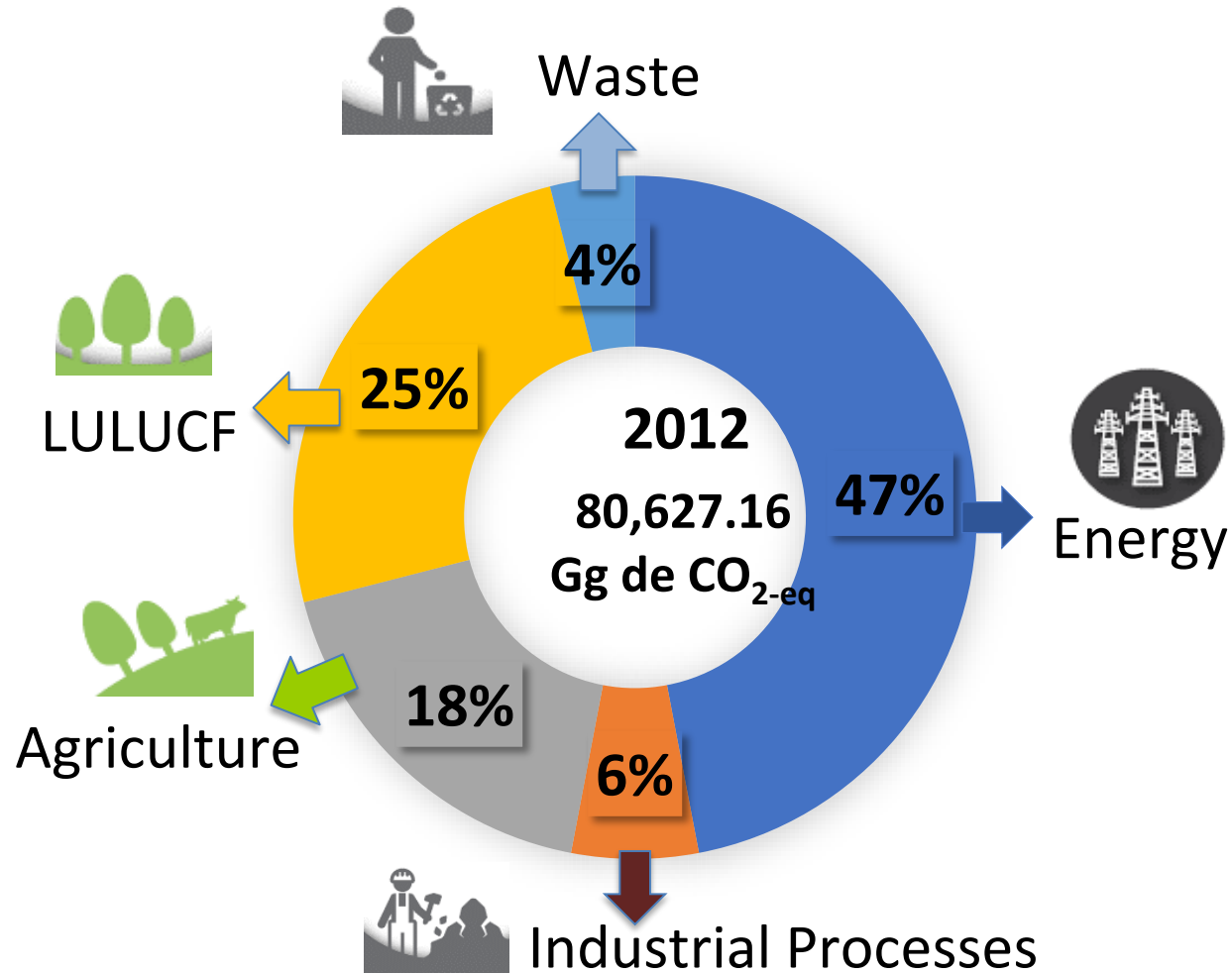
Source: REDD+ AP (MAE 2016)

# LAND USES IN DEFORESTED AREAS BETWEEN 2008 AND 2014



Source: Deforestation Map(MAE 2015) y Map of Land cover and use of the Ecuador (MAGAP-MAE, 2015)

## 2012 GREEN HOUSE GAS EMISSIONS



# REDD+ ACTION PLAN - ECUADOR

Contribute to national efforts to reduce deforestation and forest degradation, through conservation, sustainable forest management, and optimization of other land uses to reduce pressure on forests, thus contributing to the reduction of GHG emissions.

## Strategic Components



Policies and  
Institutional  
Management



Transition to  
Sustainable  
Productive  
Systems



Sustainable  
Forest  
Management

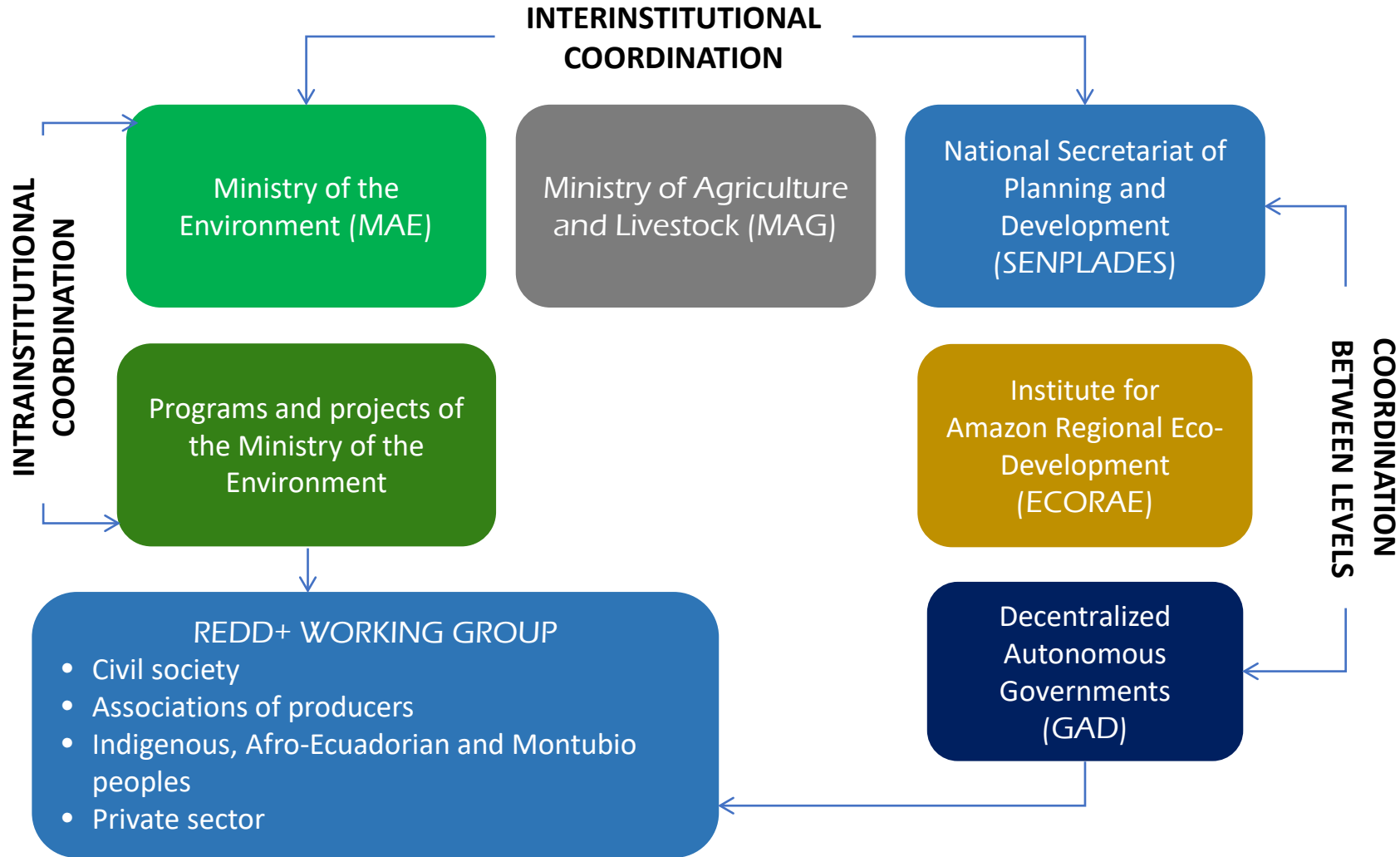


Conservation  
and  
Restoration

OPERATING COMPONENTS :

Management of M & A REDD +, M- NREF, REDD +  
Safeguards, Capacity Development, Involvement

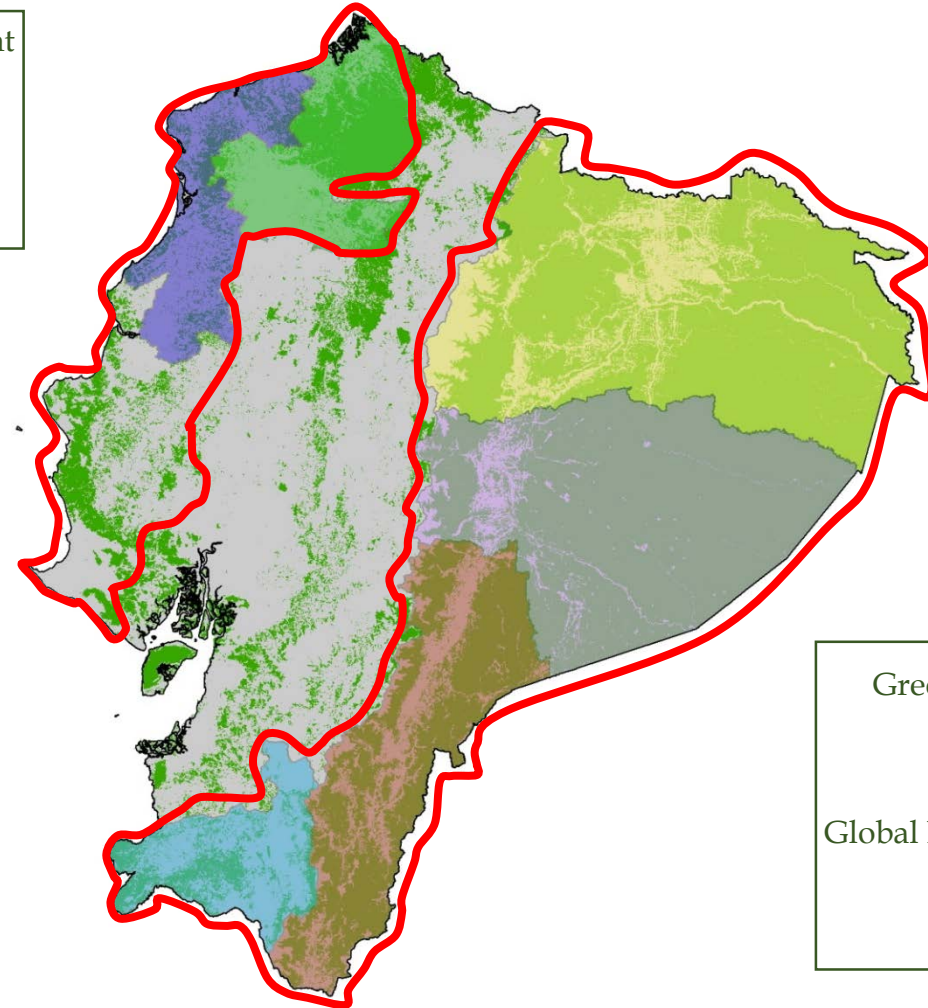
# RELEVANT INSTITUTIONAL FRAMEWORK





## PRIORITY AREAS TO IMPLEMENT REDD +

- Forest potential
- Dynamics of deforestation (medium to high)
- Indigenous territories
- Importance for biodiversity, water regulation and carbon
- Poverty.
- Six zones = 102,283 km<sup>2</sup> of Forest
- 87% located in the Amazon.

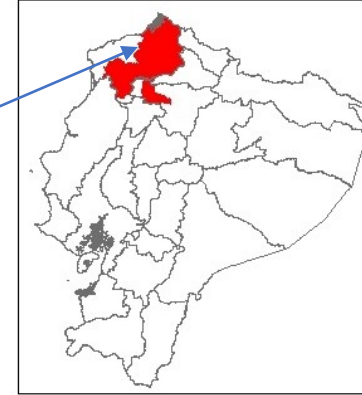


## FIP INTERVENTION AREAS

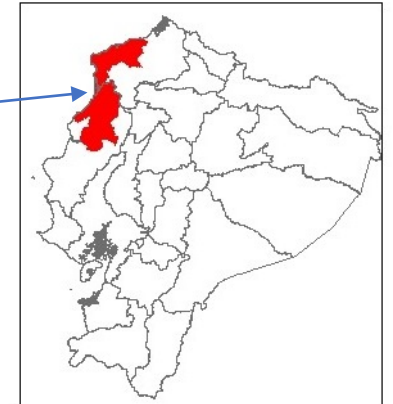
### Criteria:

- Location on the coast and foothills of the mountain range.
- Within Zones with Homogeneous Processes of Deforestation (ZPHD) and projected deforestation.
- Remnants of natural forests.
- Initiatives in implementation (has, population, etc.)
- Budgetary counterparts, techniques, etc.

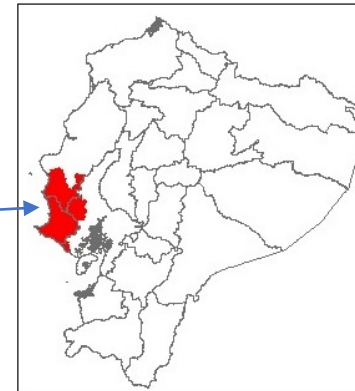
North Esmeraldas and North Pichincha Provinces



North Manabí and south Esmeraldas Provinces.



South Central Manabí and Santa Elena Provinces.



# INVESTMENT PRIORITIZATION PROCESS



- REDD+ Action Plan.
- Initiatives in progress or already designed.
- Funding from other agencies or national funding.

- Bio-ventures
- Sustainable agricultural production
- Forest Restoration
- Conservation
- Credit for Deforestation Free Goods
- Traceability - Forest Control

# HIGHLIGHTED CO-BENEFITS OF THE FIP PROGRAM

## SOCIAL

- Improved living conditions.
  - Gender and intergenerational equality
  - Improve capacities and knowledge
  - Maintenance of ancestral cultures
- Resilience of populations to climate change.

## INSTITUTIONAL

- Institutional capacities.
- Policies and the applicable legal framework.

## ECONOMIC

- Change of the productive matrix of Ecuador (bio-economy)
- Increase market opportunities.
- Accessible financing mechanisms and diversify the income of rural families.
- New non-timber productive options that complement the traditional ones.

## ENVIRONMENTAL

- Provision of environmental goods.
- Normal functioning of the forests in the long term.
- Contribute to increasing carbon stocks.

## PROJECT 1: FOREST LANDSCAPES MANAGED IN A SUSTAINABLE MANNER

Management of forest landscapes within the 3 selected zones guarantying the conservation of the forest remnants and increasing the value of the standing native forest, allowing communities to improve their income, with a gender equality focus.

### Bio-ventures:

- Ongoing initiatives
- Research processes
- Value chain
- Markets

### Conservation:

- Socio Bosque Program
- National Protected Areas System and Protective Forests
- Biological corridors under a landscape approach
- Articulation of Territorial Planning Plans (PDOT) and areas under conservation
- Private sector

### Sustainable Forest Management (SFM):

- Sustainable Forest Management practices
- Fair markets for timber with legal origin
- Forestry extensionists

### Forest control and traceability:

- System for tracking wood from the forest to its final destination (certificate of legal origin)
- Reduce the options for the sale of illegal timber
- Forest control system

**FIP Investment = USD 10,100,000**

## PROJECT 2: SUSTAINABLE MANAGEMENT OF AGRICULTURAL LANDS

Management of agricultural lands adjoining the areas under conservation in a sustainable manner, through the adoption of sustainable production practices and the restoration of degraded areas for sustainable use or conservation, guaranteeing fair and equitable participation for women, men and communities, improving or maintaining the income of their families.

### **Forest Restoration:**

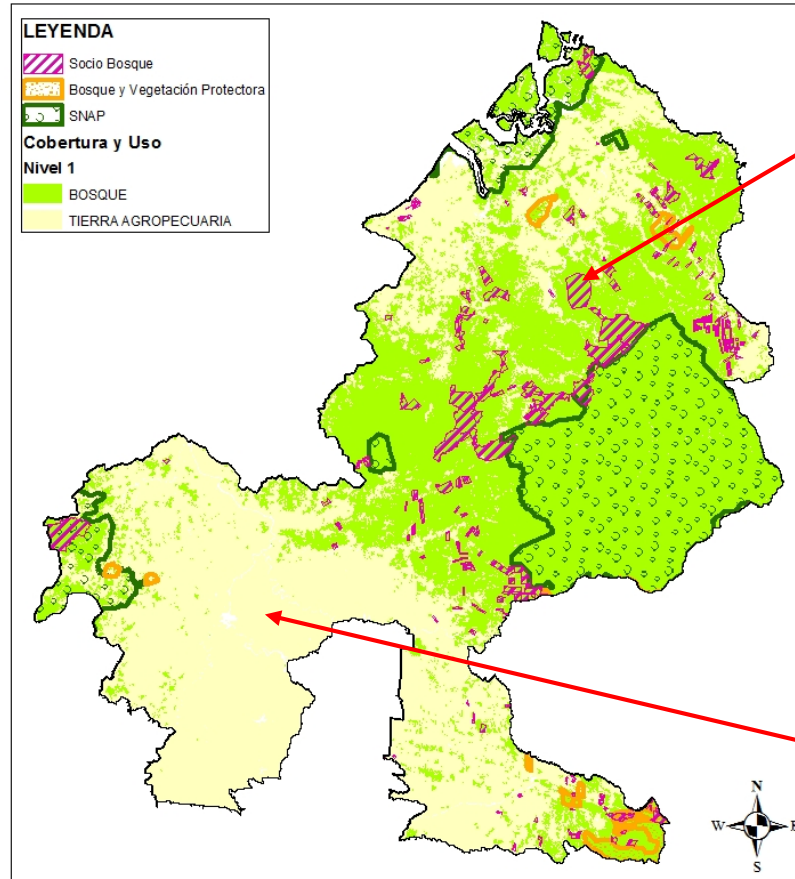
- Recovery of ecosystem services
- Sustainable use of ecosystem services
- Financing of public, private and community initiatives
- Scientific research
- Recovery of traditional knowledge in the management of native species for restoration.

### **Sustainable Agricultural Production:**

- Sustainable production practices
- Technical assistance
- Community extension workers
- Green credit lines
- Credits for goods free of deforestation.

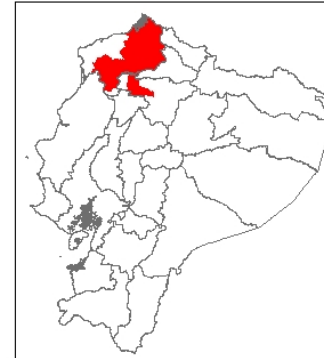
**FIP Investment = USD 12,420,000**

# LOGIC OF INTERVENTION IN TERRITORY



Sustainable Management of  
the Forest Landscape  
(Conservation, Bio-ventures,  
sustainable forest use,  
traceability and forest  
control)

## Localización



Sustainable Use of  
Agricultural Land  
(Restoration, Sustainable  
Production, Green Credits)

## FINANCIAL PLAN

Components	Indicative distribution of FIP funds (USD)			Co-financing (USD)		Total (USD)
	Donation (AT)	Loan	Total FIP	GoE	Other	
<b>Project 1</b>	1,370,000	8,730,000	10,100,000	14,240,000	3,300,000	27,640,000
<b>Project 2</b>	300,000	12,120,000	12,420,000	3,150,000	1,000,000	16,570,000
<b>Administration fees</b>	1,480,000	-	1,480,000	200,000	-	1,680,000
<b>TOTAL</b>	<b>3,150,000</b>	<b>20,850,000</b>	<b>24,000,000</b>	<b>17,590,000</b>	<b>4,300,000</b>	<b>45,890,000</b>



## PARTICIPATORY CONSULTATION PROCESSES

- 2 Workshops with the REDD+ Working Group.
- 1 Workshop in Santa Elena with local actors.
- 1 Workshop in Esmeraldas with local actors.
- 1 National Workshop in the city of Quito.

GAD, MAE and MAG provincial delegations, NGOs, universities, private companies, community organizations, Afro-Ecuadorians and indigenous people (56% of women).



- The actors involved in the Workshops determined in a participatory manner the opportunities, limitations and recommendations for the Investment Plan.
- There was active participation, which generated valuable contributions from women's organizations, which integrated their vision and perspective on the investments of the FIP.





GOBIERNO NACIONAL DE  
LA REPÚBLICA DEL ECUADOR



Ministerio  
del **Ambiente**



Ministerio  
de **Agricultura y Ganadería**

# THANKS FOR YOUR ATTENTION

---

